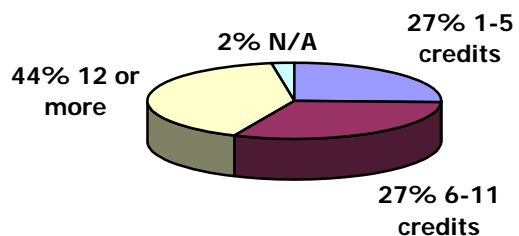


UNM-LA STUDENT OPINION SURVEY FALL 2006

How many credit hours are you taking this semester?

1 - 5		78
6 - 11		95
12 or more		125
N/A		8

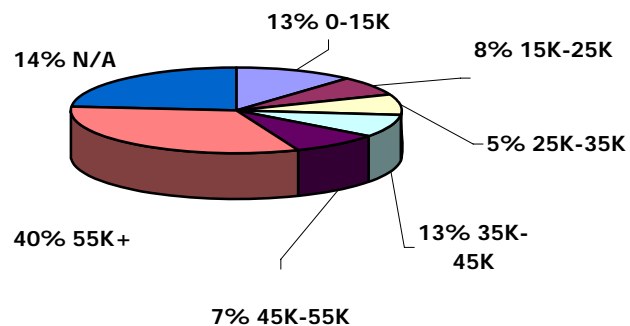
CREDIT ENROLLMENT



Range of annual household income

0 to 15,000		36
15,000 to 25,000		22
25,000 to 35,000		24
35,000 to 45,000		26
45,000 to 55,000		26
55,000 +		100
N/A		72

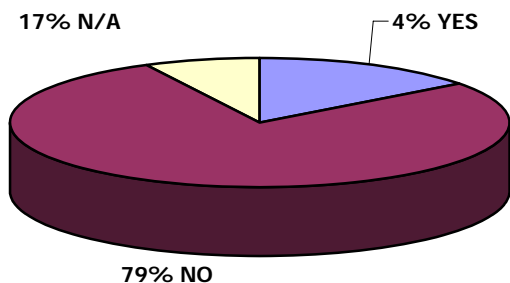
ANNUAL HOUSEHOLD INCOME



Are you the first person in your immediate family to attend college

YES	NO	N/A
45	238	23

FIRST TO ATTEND COLLEGE



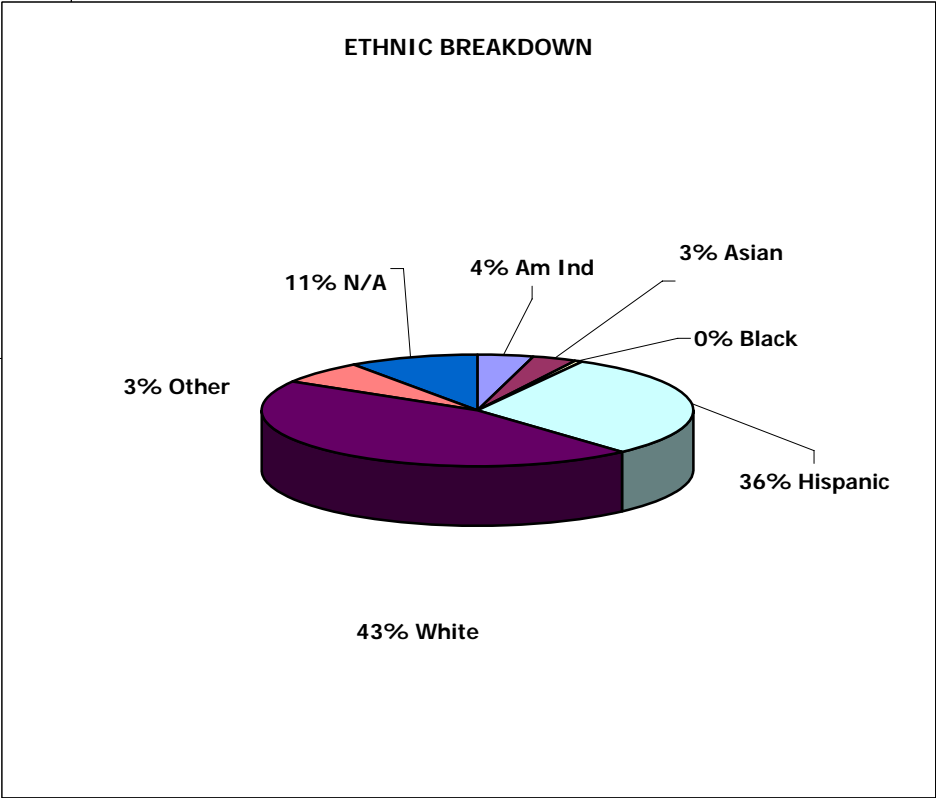
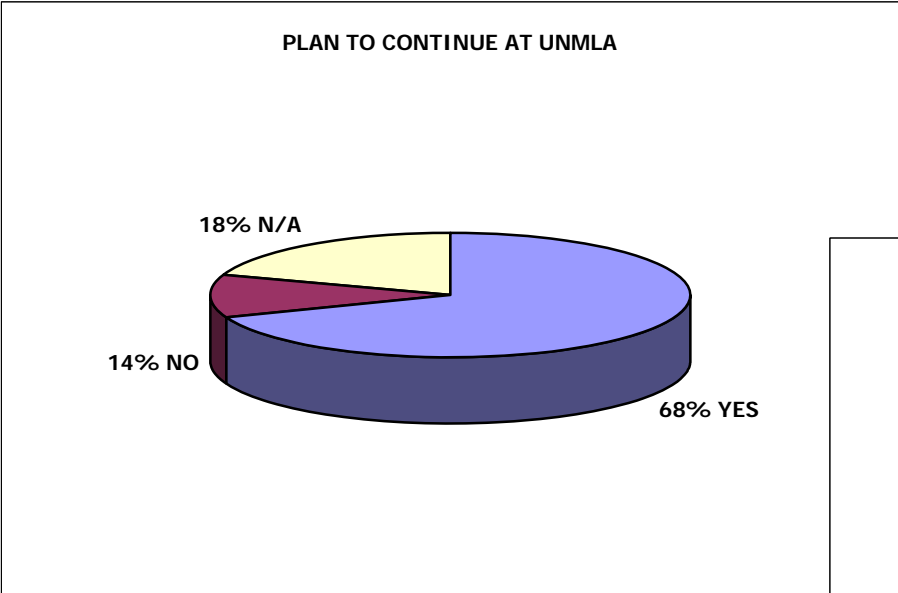
What year were you born?

Average	1970
Oldest	1932
Youngest	1990

UNM-LA STUDENT OPINION SURVEY FALL 2006

Do you plan to continue at UNM-LA next semester	YES	NO	N/A	Reasons for not planning to attend next semester	
	212	34	60	Only if class I need is offered on days/times	20

Transferring to a 4-year program	10
Moving away	6
Graduating this semester	2

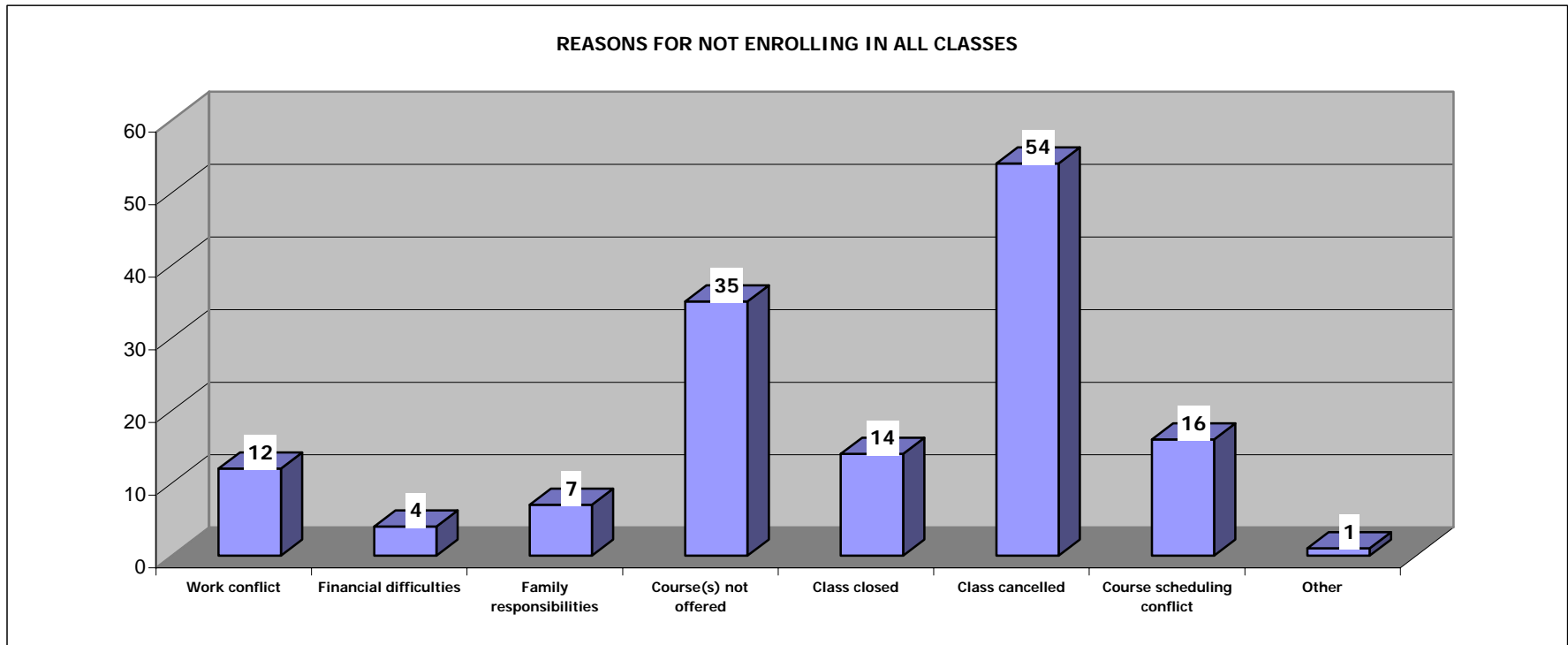
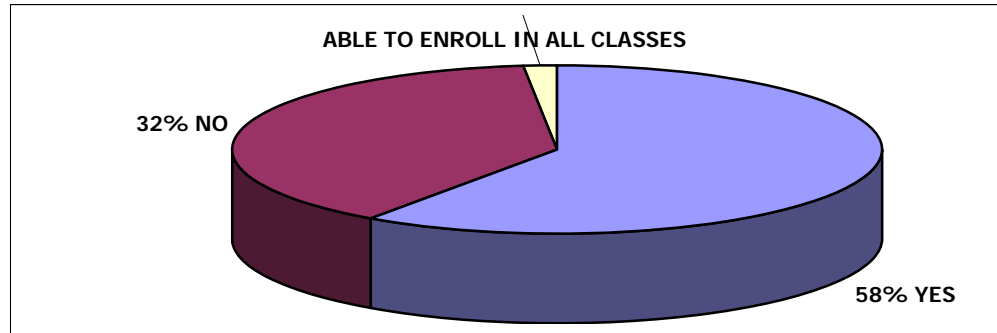


ETHNIC BREAKDOWN	
American Indian	13
Asian	10
Black or African American	2
Hispanic or Latino	92
White	139
Other	20
N/A	30

UNM-LA STUDENT OPINION SURVEY FALL 2006

Were not able to enroll in all classes due to:	
Work conflict	12
Financial difficulties	4
Family responsibilities	7
Course(s) not offered	35
Class closed	14
Class cancelled	54
Course scheduling conflict	16
Other	1

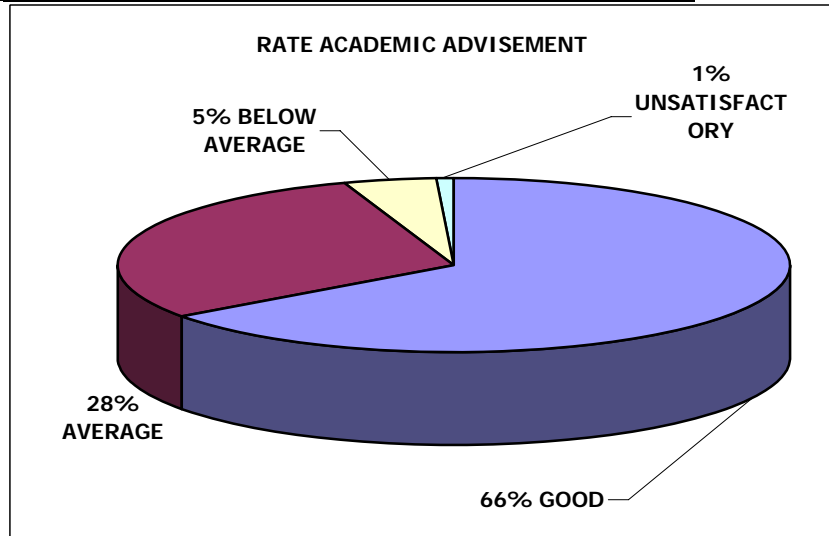
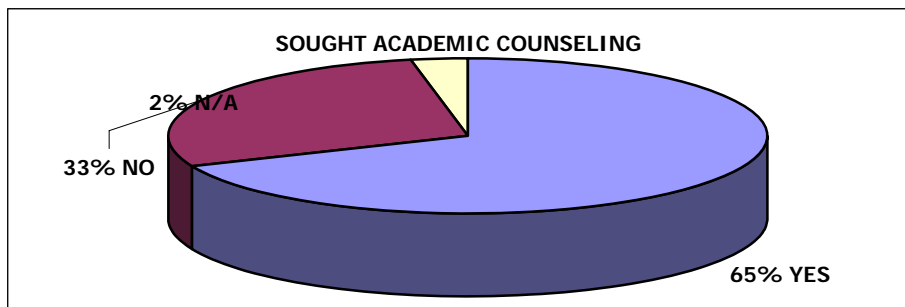
Were able to enroll in all classes	YES	NO	N/A
	183	118	5



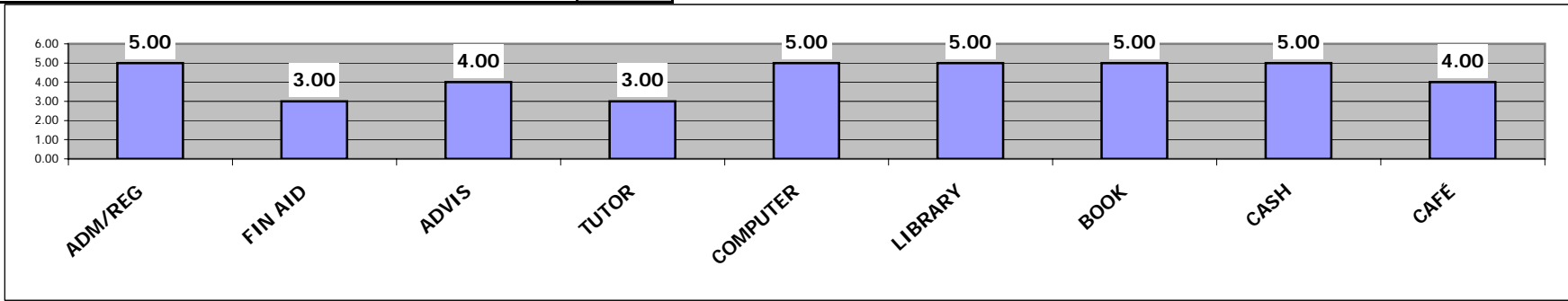
UNM-LA STUDENT OPINION SURVEY FALL 2006

Sought academic counseling prior to first day	YES	NO	N/A
	210	87	9

Rate academic advisement received	
Good	144
Average	66
Below Average	10
Unsatisfactory	2

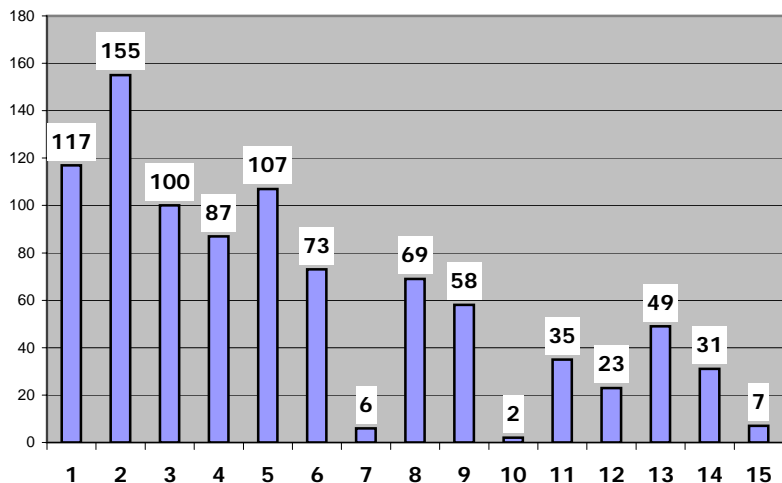


Rating of UNM-LA services: 1 Unsat. - 5 Outstanding	
Admissions/Registration	5.00
Fin Aid/Scholarships	3.00
Academic Advisement	4.00
Tutorial Services	3.00
Computer access/Facilities	5.00
Library	5.00
Bookstore	5.00
Cashier	5.00
Cafeteria	4.00



UNM-LA STUDENT OPINION SURVEY FALL 2006

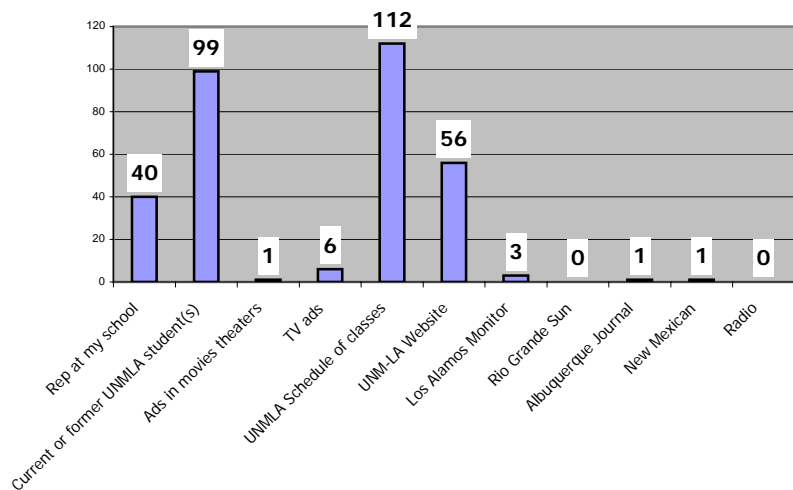
PREFERRED INSTRUCTION TIME SLOTS



Which of the following classes would best fit

1	Weekdays: 8-11am	117
2	Weekdays: 11am-1pm	155
3	Weekdays: 1-3pm	100
4	Weekdays: 3-5pm	87
5	Weekday evenings, twice a week: 5-6:30pm	107
6	Weekday evenings, twice a week: 6-7:30pm	73
7	Weekday evenings, twice a week: Other	6
8	Weekday eveinings, once a week: 5-8pm	69
9	Weekday eveings, once a week: 6-9pm	58
10	Weekday evenings, once a week: Other	2
11	Weekends: Fridays, 5-9pm	35
12	Weekends: Saturdays, 9am-5pm	23
13	Weekends: Saturdays, 9am-noon	49
14	Weekends, Saturdays, noon-5pm	31
15	Weekends, Sundays	7

BEST SOURCES OF UNMLA INFO



Which information sources were instrumental in convincing you to attend

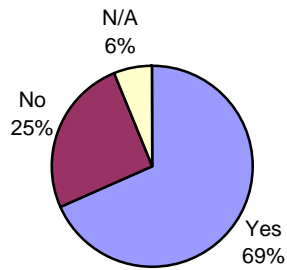
1	Rep at my school	40
2	Current or former UNMLA student(s)	99
3	Ads in movies theaters	1
4	TV ads	6
5	UNMLA Schedule of classes	112
6	UNM-LA Website	56
7	Los Alamos Monitor	3
8	Rio Grande Sun	0
9	Albuquerque Journal	1
10	New Mexican	1
11	Radio	0

UNM-LA STUDENT OPINION SURVEY FALL 2006

Are you currently employed?

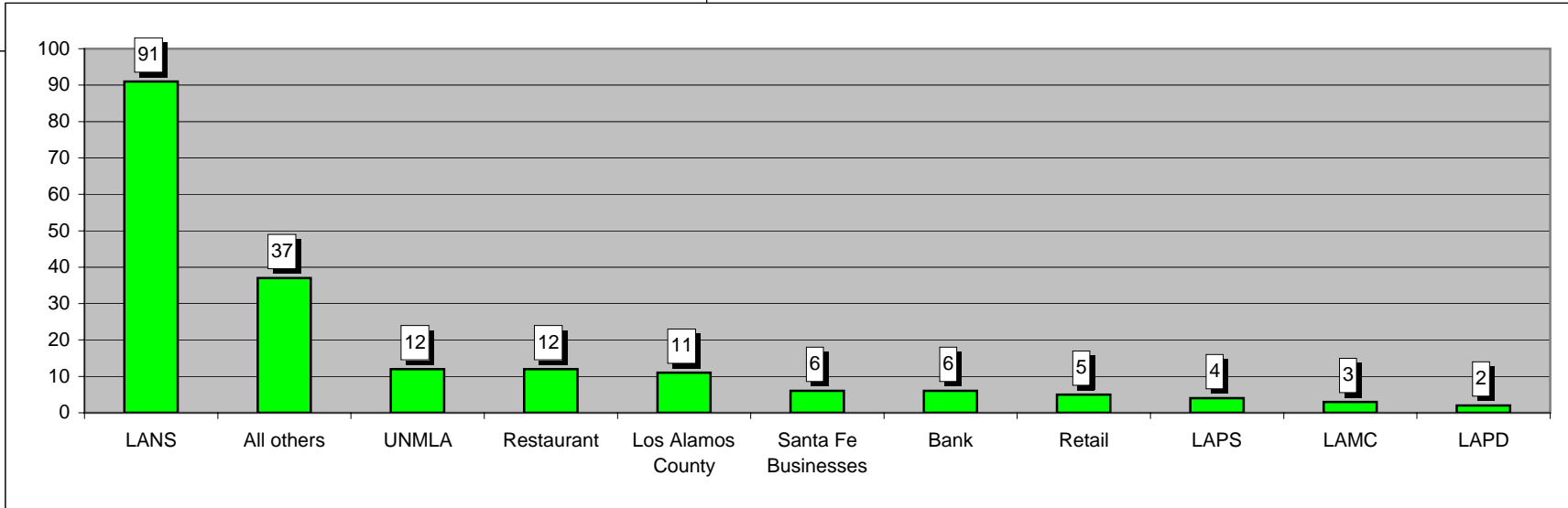
Yes	209
No	78
N/A	19

Currently Employed



Where do you work?

LANS	91
All others	37
UNMLA	12
Restaurant	12
Los Alamos County	11
Santa Fe Businesses	6
Bank	6
Retail	5
LAPS	4
LAMC	3
LAPD	2
N/A	117



UNM-LA STUDENT OPINION SURVEY FALL 2006

**Where do you work?**

Akal Security, Espanola  
Animal clinic  
Aquatic center  
Child care  
Children's clinic  
Church  
Conoco  
Construction  
Curves, LA café  
Design store  
Espanola ambulance  
housekeeping  
IHM  
integrated electric  
ITC  
KSL LA  
la  
LA Ice Rink  
LA Monitor -2  
LA PD, Smith  
LA Tech Services  
LAC -11  
LAMC -3  
LANB -3  
LANS -90  
LAPD  
LAPS -4  
Law office  
library  
little forest  
Metzgers

**Where do you work?**

NM dept of Transport  
Nstech  
Ohkay Casino  
Ojo caliente  
PAC TV  
Precision machine  
PTLA  
Pueblo  
Restaurant -12  
Retail -3  
retired LANL  
Santa Clara Travel center  
self employed  
SF bank  
SF Institute  
SF New Mexican  
SF Public Schools,  
SF Ski Basin -2  
TBC  
UNMLA -11  
USFS  
Wal-Mart -2  
WORK STUDY  
YMCA  
Zia Credit Union -3

UNM-LA STUDENT OPINION SURVEY FALL 2006

**What short-term courses would you like to see offered in the Spring 2007 semester?**

Anatomy, physiology, Spanish conversation 1-2 c	CSS continuation	more CS
Art	Dance	Nude drawing
Art, women's studies, Chicano studies	Dance, computer, excel	Paralegal - non-online
Art-English	Dentistry	piano, calculus, Engl 102
Asp.net development	Digital animation	Portfolio prep
Autoshop	Eastern religions	Pottery
Ballroom dance	Emergency Med	PPt, AMST185
Ballroom dance, waltz	Engl and Hist	psych
Basic Computer skills	Engl and math	Religion 203 by Petty
Basic Welding	English	Science, art philosophy
Basketball	English Conversation	Singing or dance
basketball	Excel	Spanish 102
Beg Unix, Adv Unix, Lenix	field astronomy/use of telescope	Spanish Conversation
Bio, chem, history, basketball	field geology	Swimming bowling
Bowling, swimming	Financial	Tennis Cycling, CJ 220
Business mngmnt	Fire science, Emergency management	Theater and Film, Philosophy
C&J	fire science, emergency mngmnt, bus operations	time mngmnt
C&j 130	Forensics	Weight lifting
CAD	Grammar	weight lifting, auto creative writing
Calculus 3, CS 152, Tech Writing, Physics	honors	Welding
Calculus, Physics, Psychology	Intro to Anthropology, Anth 200	Welding
Chinese	Intro to programming that would build on CS101	Women's Strength Training
Comic book style art	IT courses	Wood Sculpting
Comp Sci	Keyboarding	Woodsculpture, life drawing, upper div literature
Computers	language courses	woodturning, wood burning
Cosmetology, Hospitality and tourism	linear algebra and differential equations	word processing 2
Crim Justice	Literature courses	
CS 160	More applic development, web development courses	
CS102	More Business classes -3	
CS451,CS481		

UNM-LA STUDENT OPINION SURVEY FALL 2006

**What courses do you know you will need for Summer and Fall 2007?**

3D design, 2D design, Art History1	Chemistry	Intermediate Span
Accounting	Chemistry	Intro to Mngmnt
Accounting	Clinical courses, more yoga	IT courses
Acct 101, 102, math 119, 123	College Algebra	IT webserver, IS analysis and design, Physics 102
Adv Ctt, webdesign, Java	Communic	IT, CS classes
Anatomy, Physiology I & II, Psych 300 level	CS	IT119
Anatomy, Stats, philosophy	CS , higher math	Java programming, PHP programming, javascript
Anything towards BA Business	CS 201	Javascript, flash, css/dhtml/xml/info architectures
Arabic language course	CS 261	Keyboarding, Math and Trig, Algebra catch up
arcitechture courses	CS 261, EECE 2386, CS 241	Linear metric algebra
Math for poets, span 293	CS core courses	Literature English, History 161, math 111, 112, LLSS 10
AutoCad	CS160, IT119, IT165, IT147, IT 246	Math
Beg Spanish, pre-calcul, E&PS 201, Engl	CS241, CS 293, Phys, sciences, CS other courses	Math & Sci
bio 202, chem 122	cs351,CS340,EECE238,MATH319	Math 120 and Physics
Bio 203, 204, Chem 301, 303L	Differential Equations and Phys Chemistry	Math 120, Bio 100
bio, chem, history	Education	Math 121, Engl 102
Bio, chem, microbio, Human anatomy and physio	Education classes	Math 121, History, Science lab
Biochem 423 - lots of premed students work at L/	Eng 102 Algebra 2	math 15/150
Biology, Spanish	Eng 102 Algebra 2	Math 150, Pre-calc, CS courses
Business law	Engl, Sci, Math	Math 163
Business law, Word Processing, Business/Marke	English	Math 181
C++ Adv, electric chips/programming	English 101	Math and CS courses
Calc	English 102, Math	Math and English
calc 2+3	English 109	Math and History
Calc 3, circuit, media arts classes, CS 151, Cherr	English and Math 106	Math and science
calculus, gen chemistry 2	English, Math	Math for non math
Calculus, Spanish, English, Sociology	English, math	Math for non-math/engineering
Calculus, Spanish, English, Sociology	English, Math	Math, Accounting
German 102	English, Psych, Public Speaking	Math, Engl, Sci
Chem, Physics, Math 123, Engl 102, Public speal	German 102	Math, English
Chemistry	History of modern art and painting	MGT 202

UNM-LA STUDENT OPINION SURVEY FALL 2006

**What courses do you know you will need for Summer and Fall 2007?**

Mngmnt, Econ, Intermediate Acctg1, Pre-algebra trig, pre-calc  
More art design, architecture Trig, Pre-calc, Engl 219, intro to CHEM  
more upper-level courses Trigonometry  
Nutrition, Sociology, Psychology Upper-level CS& Math  
org chem, physics Upper-level for BUS  
Organic Chem 2, Chem 303, 304C Web animation, javascript  
painting, modern art, drawing 2 Window systems admin  
PHB Won't be attending  
Photoshop, illustrator, modern art woodworking  
PHYS 160, CALC 3, WORD PROCESSING 2 Word processing 2  
Physics Word processing, traditional grammar, conflict resolution  
Physics 160  
Physics 160  
Physics 162  
Physics 3, Light, sound waves for Summer 07  
physics and english  
pre-calcul  
Psych 240, Psych 260, Sociology 381, Sociology 424  
psych and language  
Sci & College Algebra  
Science, social science, music appreciation  
Sociology and Polit Sci  
Span 101, science, sw studies  
Span 293  
Span 3  
Spanish hist 293  
stat  
Stress mngmnt, Public Affairs, Speech, EMT-Basic  
Technical writing, biology2, calc 1  
Trig  
TRIG AND CALC

12/5/2006

UNM-LA STUDENT OPINION SURVEY FALL 2006

**Currently enrroled in a degree program:**

**Degree programs considering for the future?**

2yr converting to BS  
 AA -22  
 Accounting  
 art studio -4  
 AS applied sci  
 Astronomy & Physics  
 BA Psych  
 Biology -2  
 BS -4  
 Bs Biology  
 BS in CS, aa SW Studies

English, business  
 Environmn Sci  
 Fin Accounting -4  
 General Studies -8  
 IT -4  
 Lib Art -14  
 MA Education  
 Marketing  
 Music  
 Network Admin -6  
 Nursing

Accounting -2  
 Architecture  
 Art, internal design  
 Aviation Mngmnt  
 BA Architecture  
 BEE  
 Better grad program  
 Bio and Chem  
 BS -3  
 BS Public Health and Nursing  
 Business -5

BS UNM Crim Justice  
 BSCS  
 Business -26  
 CS -21  
 Crim Psych  
 Criminology  
 CS, Materials Eng  
 Dentistry, Nursing  
 DMA/Studio Art  
 Early childhood dev  
 Economics  
 Elec-Mec  
 Elect-Mech tech  
 Electrical engineering  
 Electromechanics -2  
 Elem Ed -2  
 Emergency mngmnt  
 EMPT  
 Engineering -2

Office Comm and tech  
 Phys Ed  
 Pre Bus  
 Pre Engin -4  
 Pre-Admin  
 Pre Bus  
 Proj Mangmnt  
 Radiology  
 School of architecture  
 Science  
 Southwest Studies -3  
 Studio Art -2  
 Teaching  
 Tech support  
 Unix Network admin  
 Web Technology -5

Crim justice  
 CS -4  
 CS Phd  
 EE  
 EE, CS  
 Electrical Eng BS  
 Elem ed  
 Elem Ed & Nursing  
 Engineering and Energy  
 EPS  
 Hospitality and tourism  
 IT network admin  
 Marine Bio  
 MBA  
 Mech E  
 Med school -2  
 MS /PhD lin Psyc  
 MS Nuclear Engin  
 Music

UNM-LA STUDENT OPINION SURVEY FALL 2006

**What NEW degree programs would you like UNM-LA to offer in the future?**

4yr CS, Network admin degree	Business-Teaching	MBA
4yr degrees	Chicano studies	Mech Eng
4yr E&PS	Classical studies	More Bio
4yr program	Comp Forensics	More music classes
Accounting	Crim Justice -4	More nuclear, radiological
Adv Degrees	Criminology	More teaching programs
ANTHROPOLOGY, ARCHEOLOGY	CS	MS degrees -3
Architecture -3	Dentistry, Nursing	MS in CS
AS Aviation	Ed and Music	Music degree -3
asp. Net development	Education	need premed reqs
Audio-Engineering	EE	Support the current prog, hard enough to find crses
AutoCad, Drafting, marketing, software	Electric engineering	Nuc Engin
BA English, BS Education	Elem ed	Nursing -2
BS Programs -5	Elementary ED	Paralegal, nursing, BS accounting
BS & MS in Web tech	Emergency mngmnt	Phys Ed
BS Business Adm	Engineering	Psychology -3
BS Engineering	Envir Sci	Spanish
BS in Accounting	Envir Sci, Mech Engin	Weather degrees
BS in Dig Media	Ethical hacking	Webdesign
BS in IT	Film, Acting, Theatre	
BS in Web Tech	HR	
BS Net Admin/ IT	Industrial art	
BS of SW studies	Industrial art	
BS Programs	Inf tech	
BS Programs	Information Mngmnt	
BS Programs	Interior design	
BS psych	ITV for BS program	
BSN	Karate, Self-defense	
BUS Mangmnt	Ladac	
Bus, Behavior Sci, Econ, MNGMNT, Int Studies	Make UNMLA a 4yr school	

UNM-LA STUDENT OPINION SURVEY FALL 2006

**What NEW courses(100-200 level) would you like to have offered at UNM-Los Alamos (that are not currently being offered) in the future?**

Accounting	More medical courses
American studies, Hispanic studeis	More science
Animation	More uncanceled courses
Arabic language	Music
Architecture -2	Nanoscience
asp.net vb.net 2005	Net Programming, Game development, Exchange Server
Blacksmithing	Paralegal
balroom dance	PHP
Bio, Environ(not clean-up)	Programming in Net, programming with Python
Blacksmithing	Soccer
Building trades - another CC offered a course on	Thatre
CAD	Topology
Class w electric engineering component	Vacuum Tech
Comic book style art	Voice and any music classes
Computer languages	
Design engineering	
Electrical Eng	
Emergency Med	
Envir Sci	
Fire science, emergency management	
French, German, Latin, Japanese, Chinese	
German 102 -2	
Guitar	
History 204, 205, Intro to Child, Adolescent Psych	
Interior design, jazzersize, hiphop dance	
Intermediate course in UNIX	
Journalism	
Math courses beyond calculus 3	
Mineralogy	
More anthropology (different teachers)	

12/5/2006