



Course History Overview

Prepared by: Valida Dushdurova, Institutional Research

UNMLA Course History

Summary

Course cancellations are a constant source of disappointment for both students and faculty. Over the years, UNM-LA has been working to reduce the number of cancelled courses, while trying to meet student demand and maintain adequate faculty workload. Our course cancellation rate has been decreasing in the most recent academic years as reflected in the stats below.

In Fall 2009 we had to cancel 36% of the courses offered. This is comparable to Fall 2008 when we also cancelled 35% of all courses offered. Our all-time high for cancellations in Fall semesters was 43% in Fall 2006, the lowest cancellation rate was 21% in Fall 1998. Our average course cancellation rate for fall semesters is 32%

In Spring 2009 we cancelled 29% of courses offered, which is lower than the 34% cancelled in Spring 2008, but higher than 19% cancelled in Spring 2007. The average cancellation rate for Spring semesters is 26%.

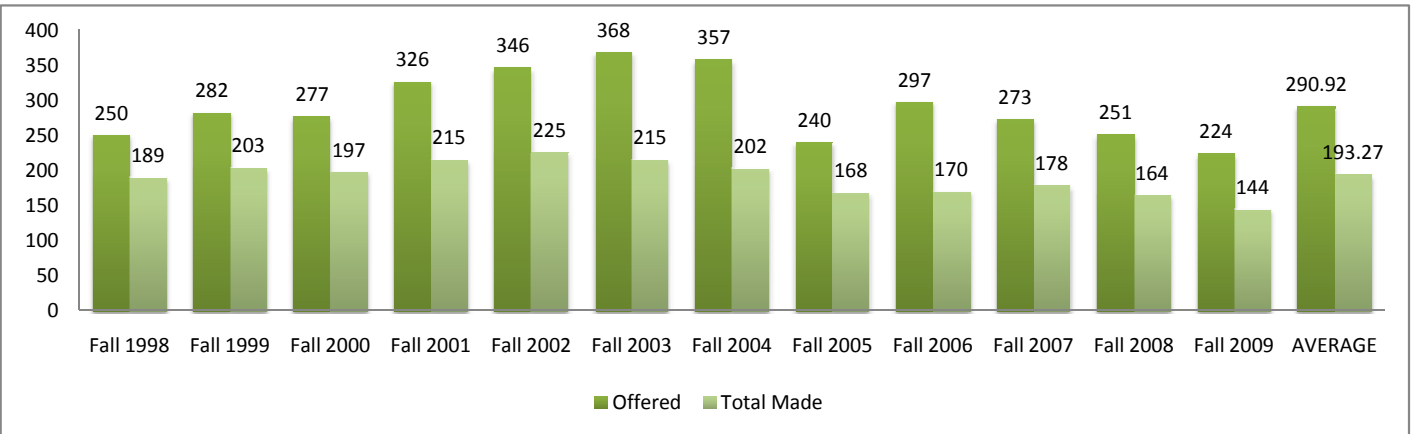
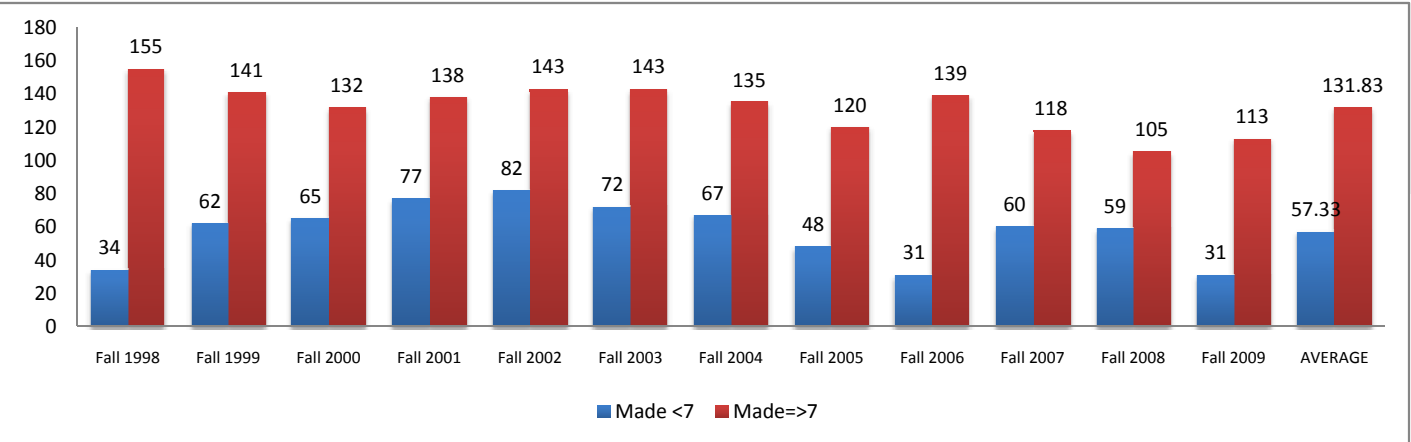
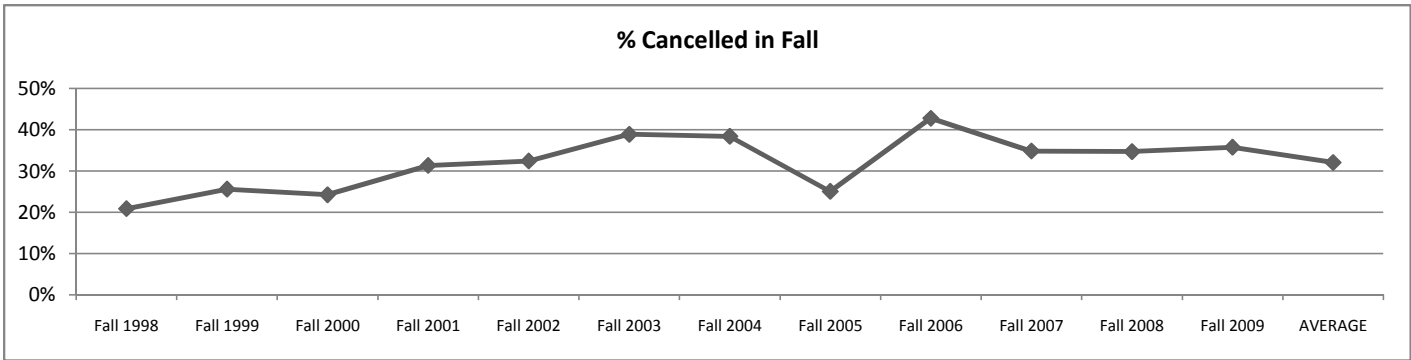
In Summer 2008 we cancelled 35% of all courses offered. This is a considerable improvement over the previous Summer semester (Summer 2007) when we cancelled 46% of courses offered. The average cancellation rate for Summer is 34%.

At our Bernalillo site, we cancelled 34% of all courses in Fall 2009, which is considerably less than the 52% cancelled in the previous fall semester. The average cancellation rate for fall semesters is 28%. In Spring 2009, 28% of courses were cancelled at the Bernalillo site, which is considerably lower than the 59% cancelled in Spring 2008. The average Spring cancellation rate at the site is 21%. In Summer 2009, we cancelled 42% of courses at the Bernalillo site, which is slightly lower than the 43% cancelled in the previous Summer semester. The average Summer semester course cancellation rate for the Bernalillo site is 34%.

UNMLA Course History

Fall Semester Courses at the Los Alamos Site

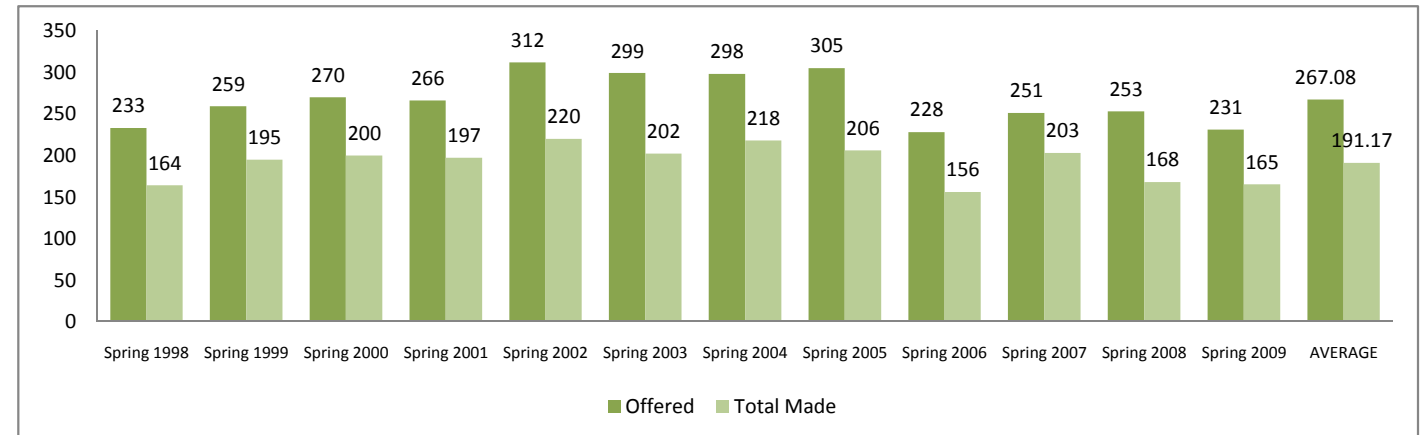
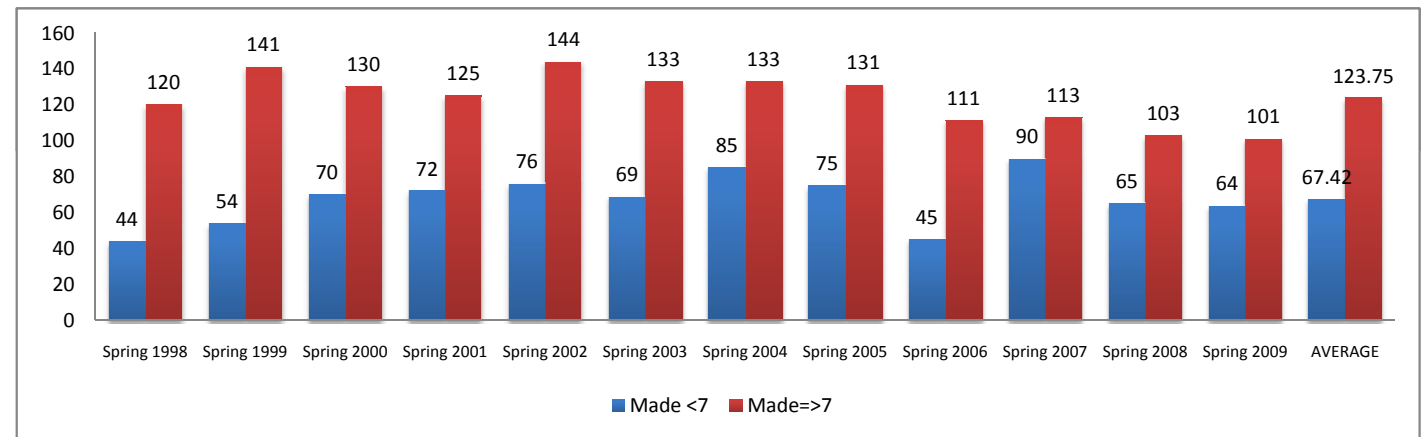
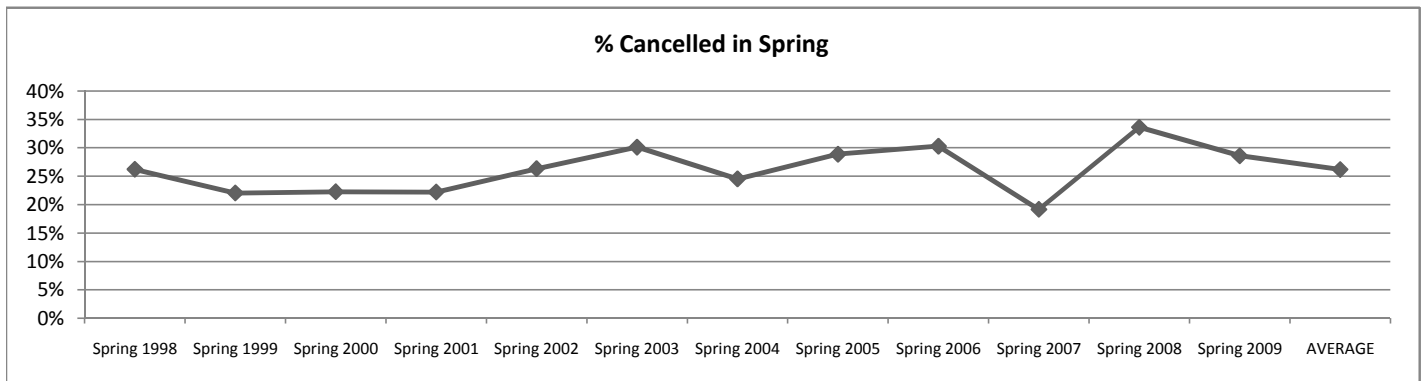
Semester	Offered	Cancelled	% Cancelled	Made <7	Made =>7	Total Made	Total # of St	Total Cr. Hrs.
Fall 1998	250	52	21%	34	155	189	2173	4979
Fall 1999	282	72	26%	62	141	203	2099	4912
Fall 2000	277	67	24%	65	132	197	1798	4467
Fall 2001	326	102	31%	77	138	215	1944	4908
Fall 2002	346	112	32%	82	143	225	2042	5214
Fall 2003	368	143	39%	72	143	215	2028	5448
Fall 2004	357	137	38%	67	135	202	1914	5070
Fall 2005	240	60	25%	48	120	168	1568	4409
Fall 2006	297	127	43%	31	139	170	1744	4656
Fall 2007	273	95	35%	60	118	178	1423	3804
Fall 2008	251	87	35%	59	105	164	1387	3665
Fall 2009	224	80	36%	31	113	144	1132	3209
AVERAGE	290.92	94.50	32.03%	57.33	131.83	193.27	1771.00	4561.75



UNMLA Course History

Spring Semester Courses at the Los Alamos Site

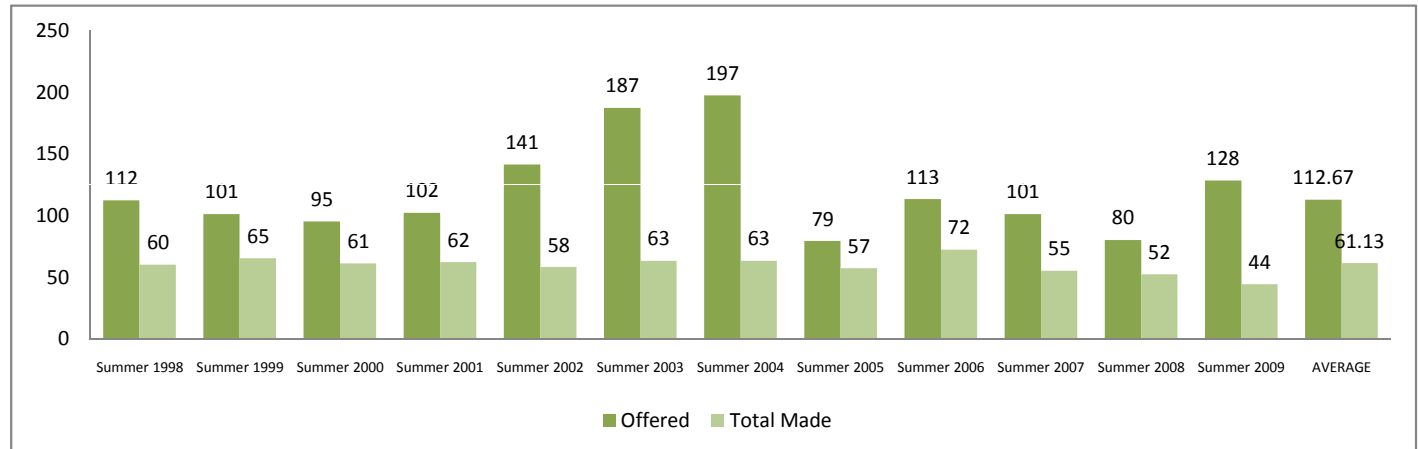
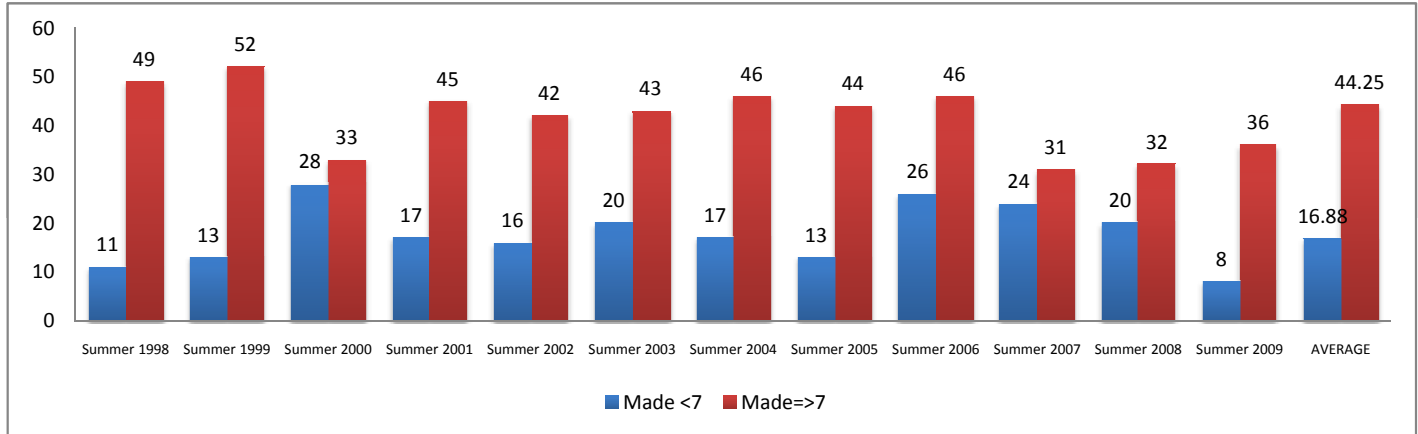
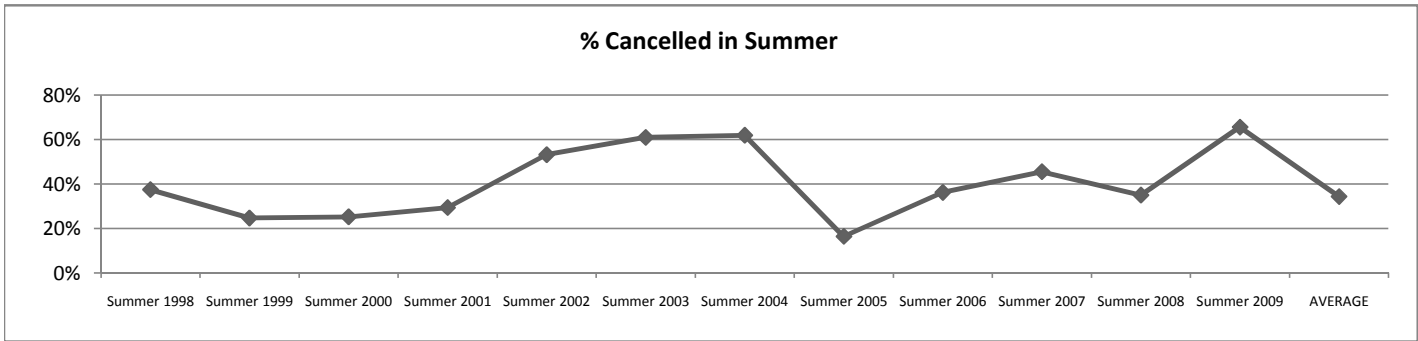
Semester	Offered	Cancelled	% Cancelled	Made <7	Made =>7	Total Made	Total % of St	Total Cr. Hrs.
Spring 1998	233	61	26%	44	120	164	1662	4116
Spring 1999	259	57	22%	54	141	195	1865	4415
Spring 2000	270	60	22%	70	130	200	1792	4330
Spring 2001	266	59	22%	72	125	197	1688	4235
Spring 2002	312	82	26%	76	144	220	1945	5051
Spring 2003	299	90	30%	69	133	202	1877	4930
Spring 2004	298	73	24%	85	133	218	1866	5005
Spring 2005	305	88	29%	75	131	206	1821	4803
Spring 2006	228	69	30%	45	111	156	1561	4233
Spring 2007	251	48	19%	90	113	203	1685	4391
Spring 2008	253	85	34%	65	103	168	1359	3492
Spring 2009	231	66	29%	64	101	165	1363	3644
AVERAGE	267.08	69.83	26.16%	67.42	123.75	191.17	1707.00	4387.08



UNMLA Course History

Summer Semester Courses at the Los Alamos Site

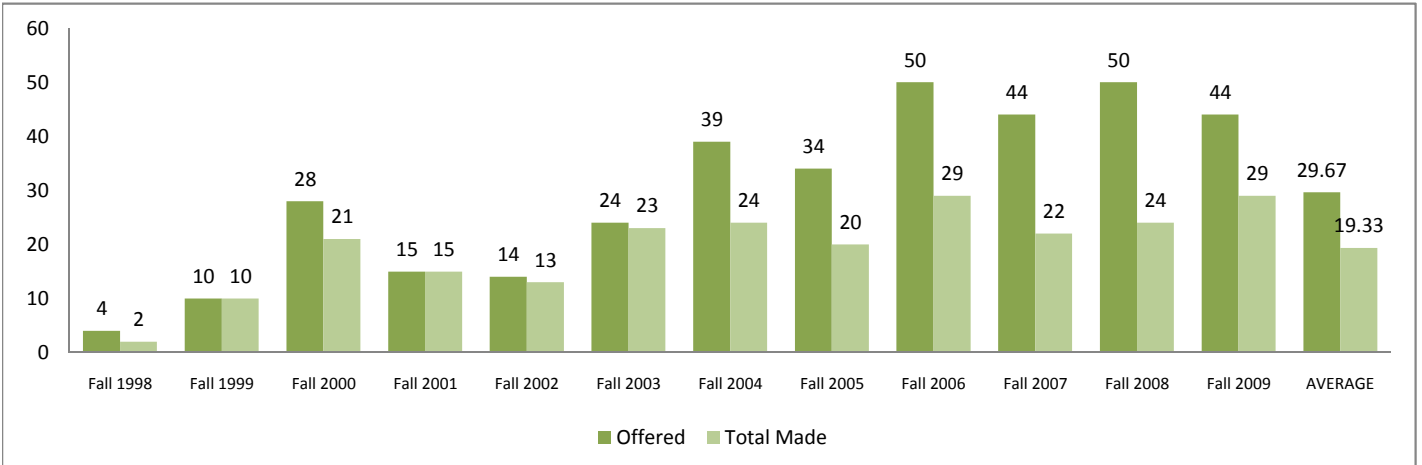
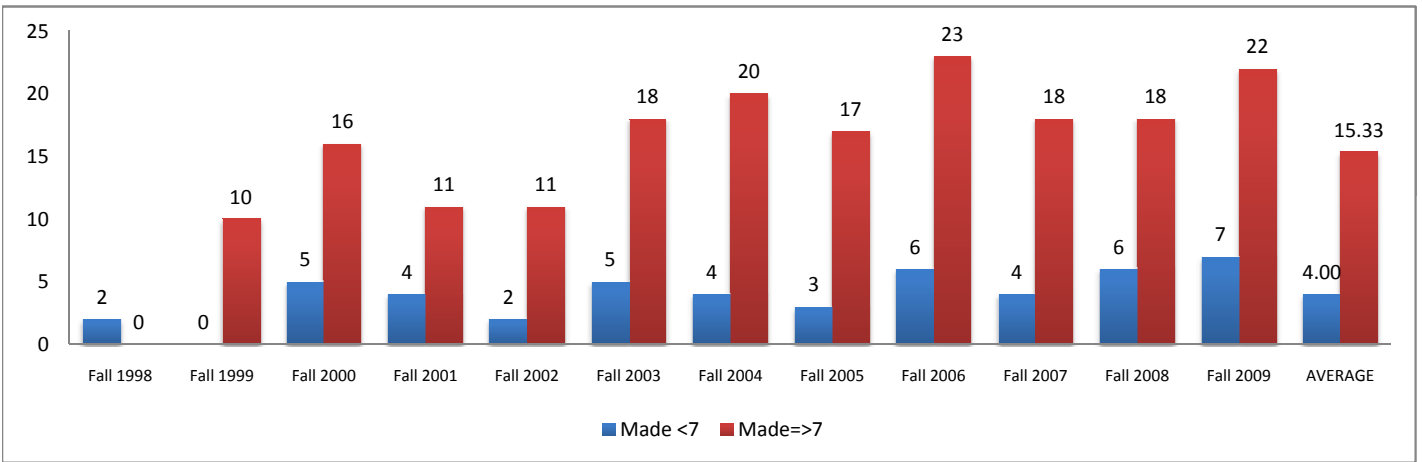
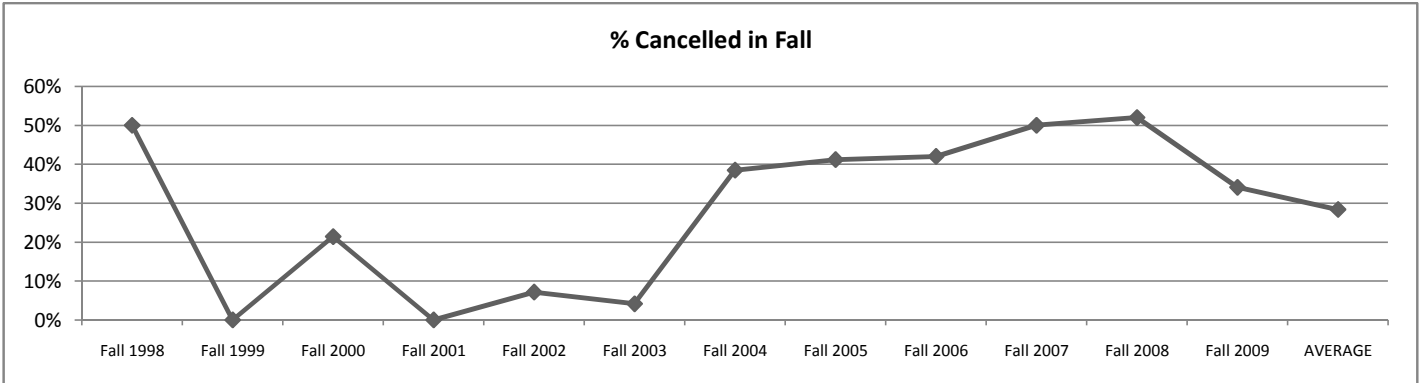
Semester	Offered	Cancelled	% Cancelled	Made <7	Made =>7	Total Made	Total # of St	Total Cr. Hrs.
Summer 1998	112	42	38%	11	49	60	705	1550
Summer 1999	101	25	25%	13	52	65	729	1609
Summer 2000	95	24	25%	28	33	61	465	1176
Summer 2001	102	30	29%	17	45	62	678	1477
Summer 2002	141	75	53%	16	42	58	643	1518
Summer 2003	187	114	61%	20	43	63	643	1659
Summer 2004	197	122	62%	17	46	63	921	1818
Summer 2005	79	13	16%	13	44	57	700	1794
Summer 2006	113	41	36%	26	46	72	622	1577
Summer 2007	101	46	46%	24	31	55	435	1128
Summer 2008	80	28	35%	20	32	52	519	1383
Summer 2009	128	84	66%	8	36	44	542	1325
AVERAGE	112.67	49.44	34.39%	16.88	44.25	61.13	685.50	1575.13



UNMLA Course History

Fall Semester Courses at the Bernalillo Site

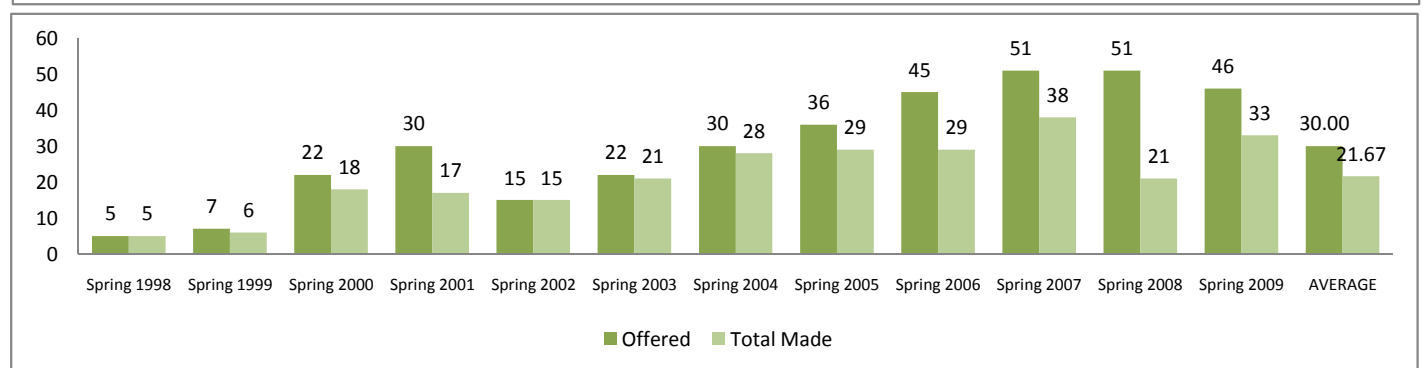
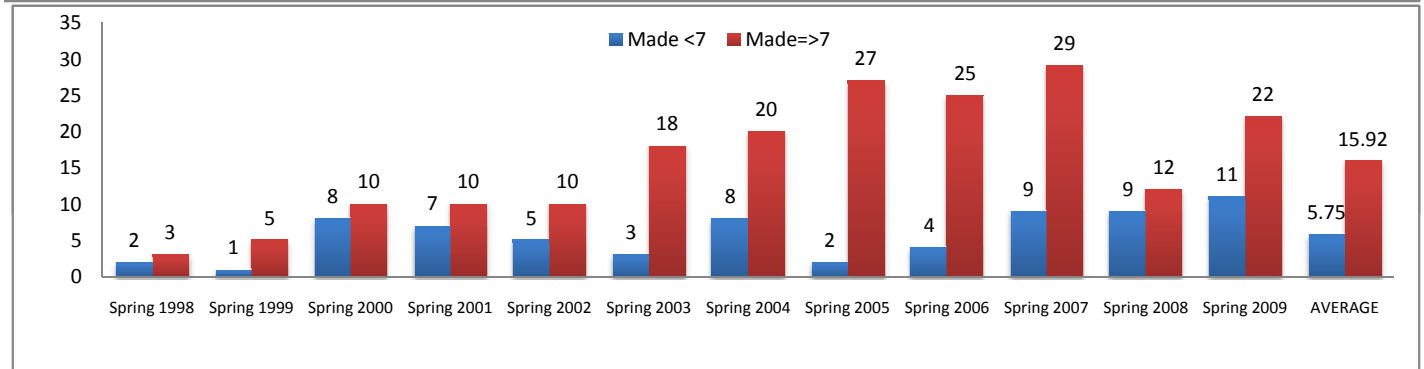
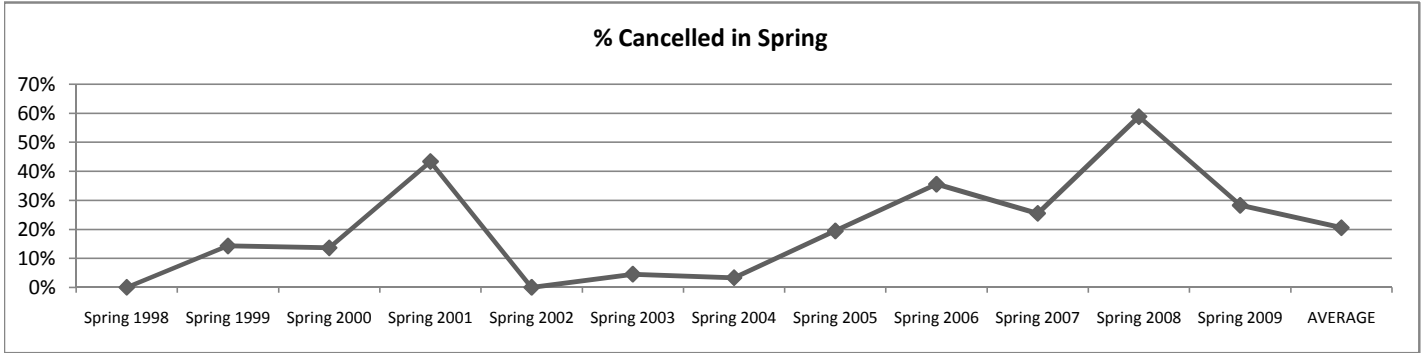
Semester	Offered	Cancelled	% Cancelled	Made <7	Made =>7	Total Made	Total # of St	Total Cr. Hrs.
Fall 1998	4	2	50%	2	0	2	10	30
Fall 1999	10	0	0%	0	10	10	99	280
Fall 2000	28	6	21%	5	16	21	194	412
Fall 2001	15	0	0%	4	11	15	116	317
Fall 2002	14	1	7%	2	11	13	147	367
Fall 2003	24	1	4%	5	18	23	282	770
Fall 2004	39	15	38%	4	20	24	273	744
Fall 2005	34	14	41%	3	17	20	205	557
Fall 2006	50	21	42%	6	23	29	277	799
Fall 2007	44	22	50%	4	18	22	229	635
Fall 2008	50	26	52%	6	18	24	250	674
Fall 2009	44	15	34%	7	22	29	542	1325
AVERAGE	29.67	10.25	28.37%	4.00	15.33	19.33	218.67	575.83



UNMLA Course History

Spring Semester Courses at the Bernalillo Site

Semester	Offered	Cancelled	% Cancelled	Made <7	Made =>7	Total Made	Total # of St	Total Cr. Hrs.
Spring 1998	5	0	0%	2	3	5	29	95
Spring 1999	7	1	14%	1	5	6	75	245
Spring 2000	22	3	14%	8	10	18	131	347
Spring 2001	30	13	43%	7	10	17	151	357
Spring 2002	15	0	0%	5	10	15	125	333
Spring 2003	22	1	5%	3	18	21	236	609
Spring 2004	30	1	3%	8	20	28	307	819
Spring 2005	36	7	19%	2	27	29	380	1005
Spring 2006	45	16	36%	4	25	29	293	809
Spring 2007	51	13	25%	9	29	38	342	797
Spring 2008	51	30	59%	9	12	21	191	532
Spring 2009	46	13	28%	11	22	33	326	887
AVERAGE	30.00	8.17	20.56%	5.75	15.92	21.67	215.50	569.58



UNMLA Course History

Summer Semester Courses at the Bernalillo Site

Semester	Offered	Cancelled	% Cancelled	Made <7	Made =>7	Total Made	Total # of St	Total Cr. Hrs.
Summer 1998	4	2	50%	1	1	2	14	42
Summer 1999	7	2	29%	0	5	5	53	139
Summer 2000	20	6	30%	6	8	14	114	261
Summer 2002	5	0	0%	3	2	5	40	120
Summer 2003	7	0	0%	0	7	7	147	255
Summer 2004	22	10	45%	2	10	12	121	325
Summer 2005	24	14	58%	2	8	10	93	241
Summer 2006	20	8	40%	7	5	12	127	208
Summer 2007	27	11	41%	10	6	16	106	226
Summer 2008	28	12	43%	10	5	15	88	238
Summer 2009	26	11	42%	7	8	15	138	357
AVERAGE	16.40	6.50	33.60%	4.36	5.91	10.27	94.64	219.27

No Courses were offered in Summer 2001

