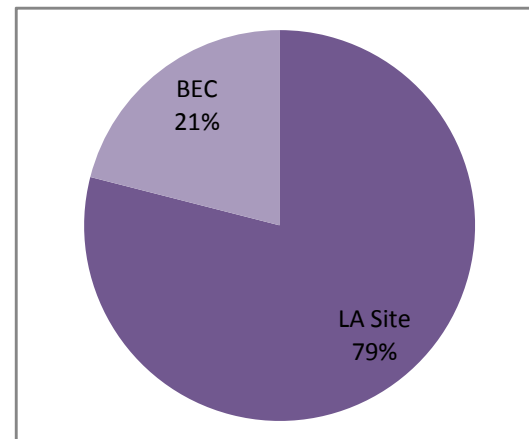
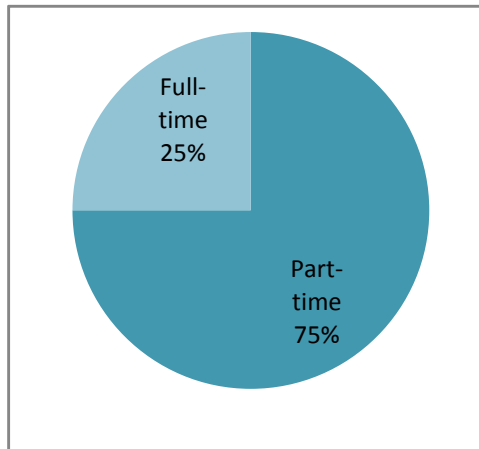
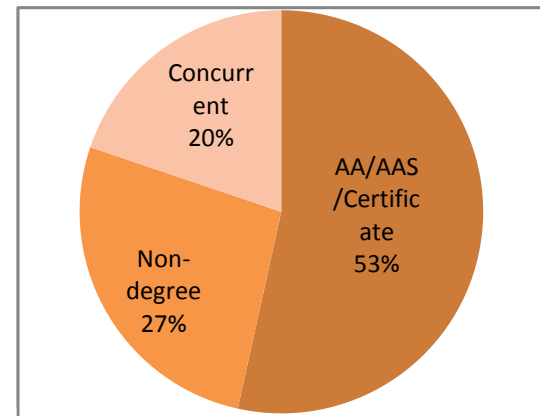
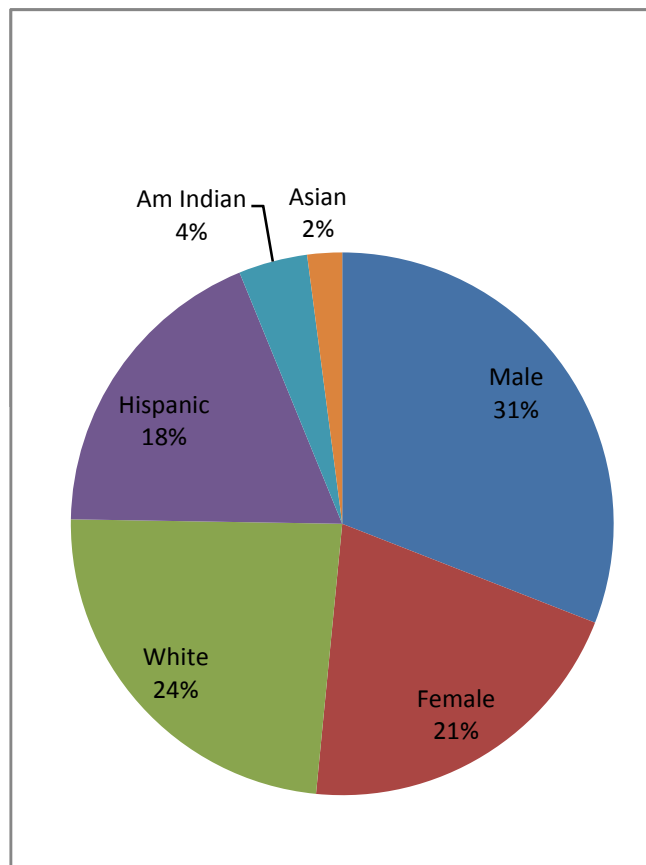
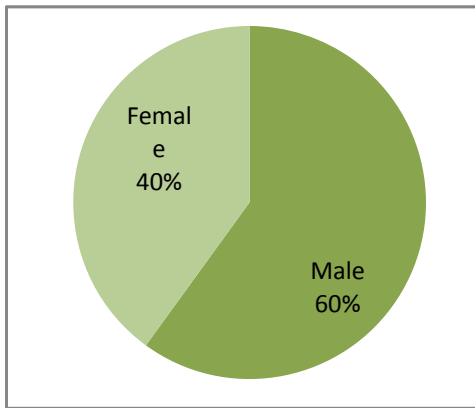


UNM-LA Student Profile Spring 2009 and Fall 2009

Based on student demographic data from Spring 2009 and Fall 2009 semesters a typical UNMLA student is a minority female (most likely Hispanic), 23 years of age, enrolled part-time in an AA Degree program. This is most likely her second or third semester at UNMLA. She comes from Los Alamos County. She has moderate financial means (not needy enough to qualify for financial aid), so she works to provide for herself.

Of every 100 students enrolled at UNMLA, 60 are female, 40 are male; 49 of them are minority students (36 Hispanic, 8 American Indian, 4 Asian, 1 Black), 46 are White, and 4 prefer not to identify their ethnicity. 75 students are enrolled part-time and 25 full-time. Looking at their program enrollment, 54 students are pursuing an AA/AAS or a Certificate, 27 are enrolled in a non-degree program, and 20 students are concurrent enrollees. 21 students are enrolled at the Bernalillo Education Center (BEC), 79 are enrolled at the Los Alamos site.

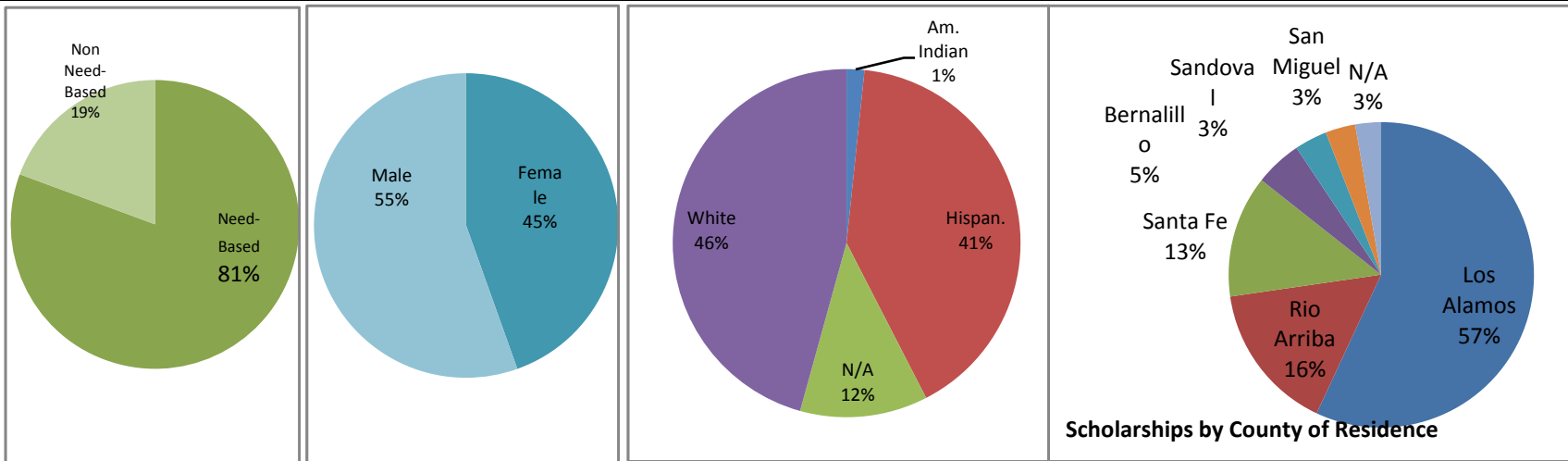


UNM-LA Student Profile Spring 2009 and Fall 2009

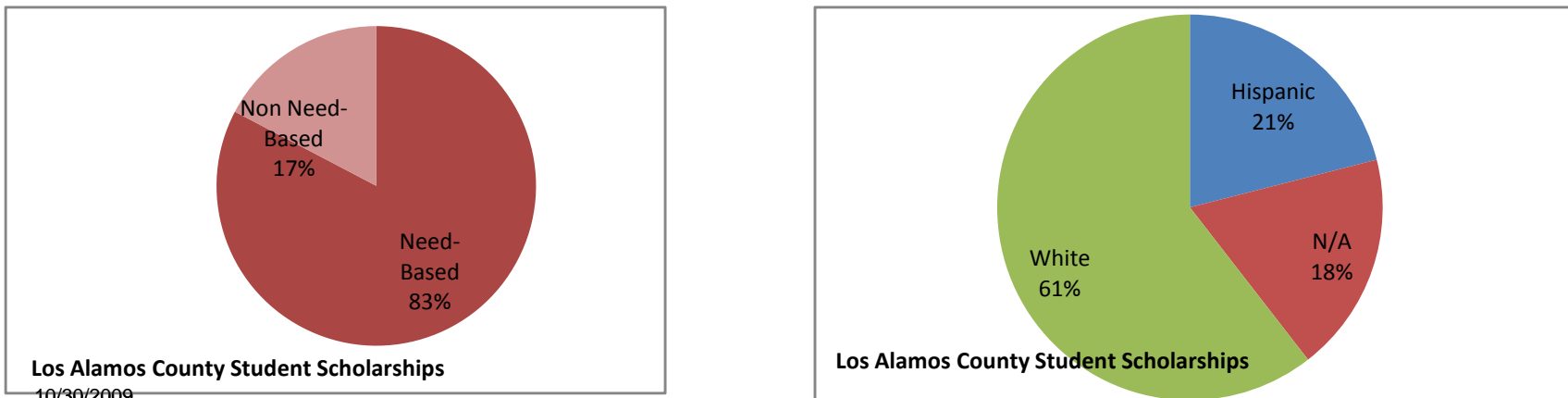
Of all scholarships awarded by UNMLA 81% are need-based, 19% are non need-based. 55% of all scholarship recipients are male, 45% are female.

46% of all scholarship recipients are White, 41% are Hispanic, 1% are Am. Indian and 12% did not specify.

When broken down by county of residence, 57% of all scholarship recipients live in Los Alamos county, 16% in Rio Arriba county, 13% in Santa Fe county, 5% in Bernalillo county, 3% each in Sandoval & San Miguel counties & 3% from all others.



Of the scholarship recipients who reside in Los Alamos county, 83% receive need-based scholarships and 17% receive non need-based. 61% of scholarship recipients from Los Alamos county are White, 21% are Hispanic and 18% did not specify.



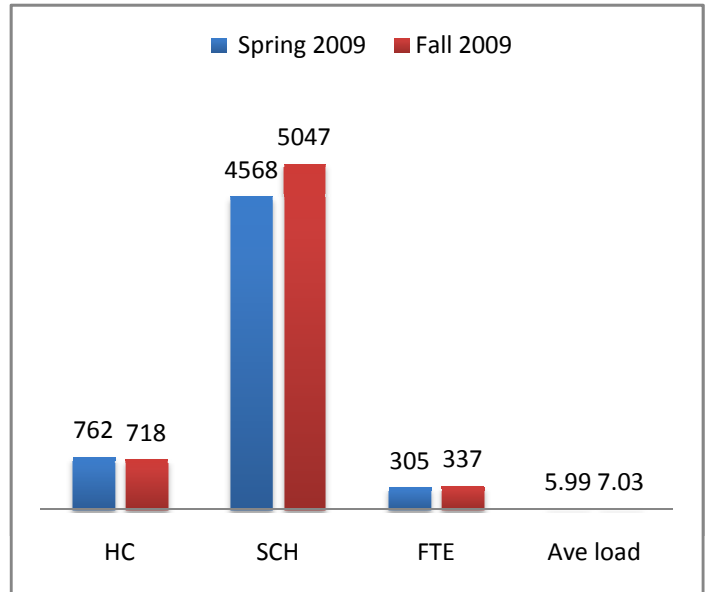
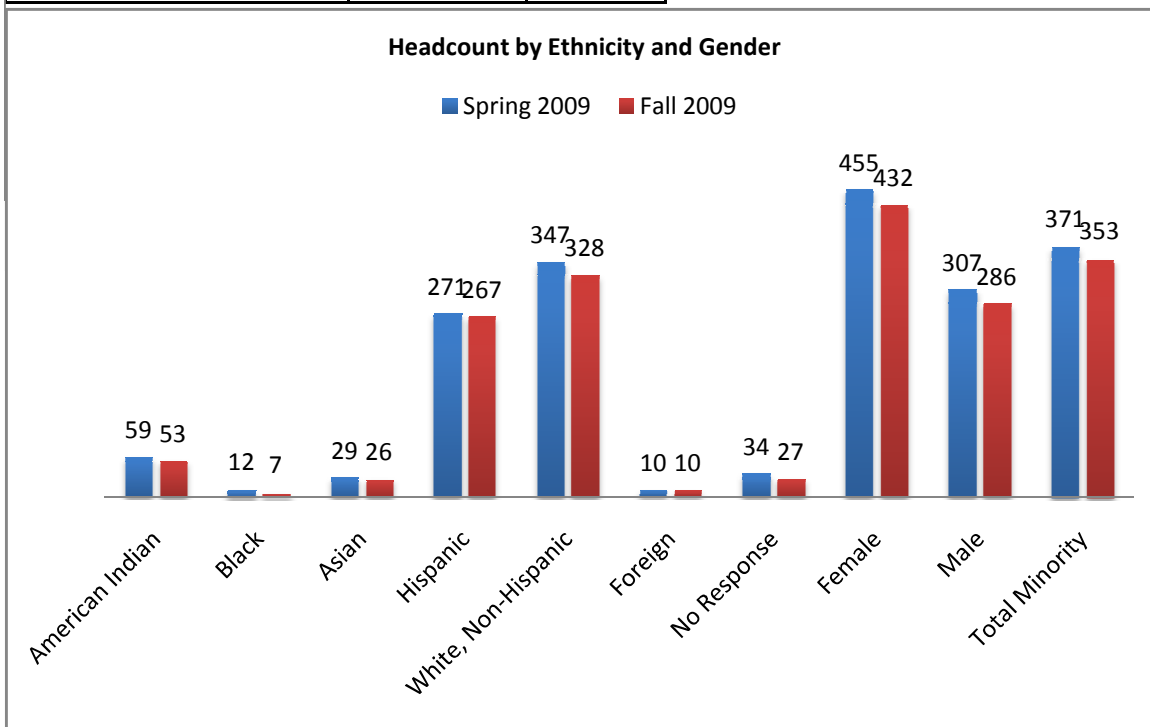
UNM-LA Student Profile Spring 2009 and Fall 2009

Headcount by Ethnicity and Gender

	Spring 2009	Fall 2009
American Indian	59	53
Black	12	7
Asian	29	26
Hispanic	271	267
White, Non-Hispanic	347	328
Foreign	10	10
No Response	34	27
Female	455	432
Male	307	286
Total Minority	371	353
Total Headcount	762	718
Minority % of total	49%	49%

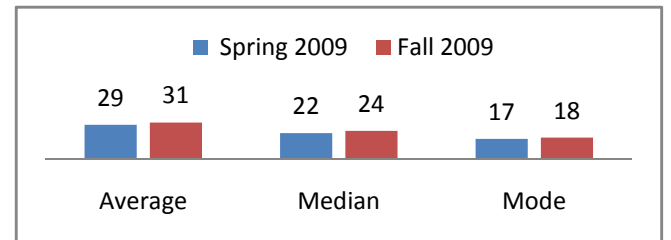
Student Credit Hours, FTE & Average Load

	Spring 2009	Fall 2009
HC	762	718
SCH	4568	5047
FTE	305	337
Ave load	5.99	7.03



Students by Age

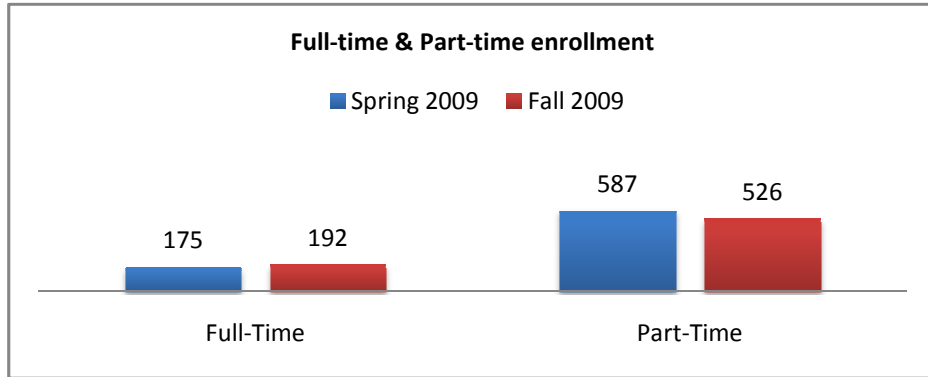
	Spring 2009	Fall 2009
Average	29	31
Median	22	24
Mode	17	18



UNM-LA Student Profile Spring 2009 and Fall 2009

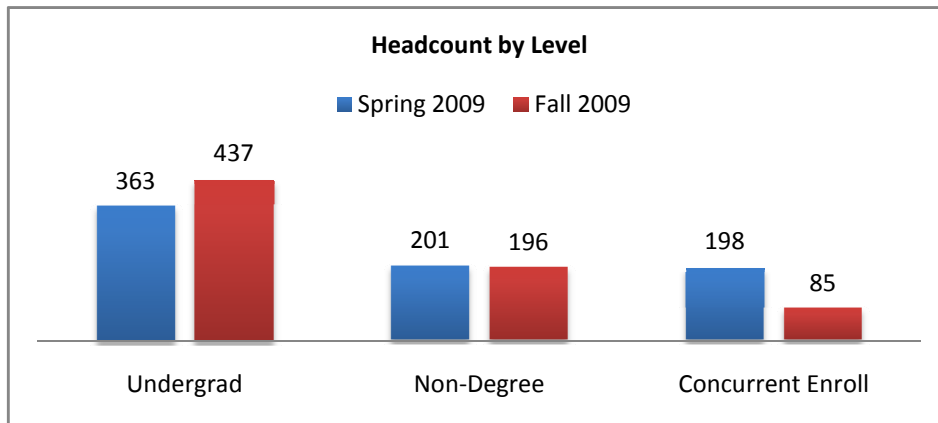
Full-Time & Part-Time Enrollment

	<i>Spring 2009</i>	<i>Fall 2009</i>
Full-Time	175	192
Part-Time	587	526
Total Enrolled	762	718



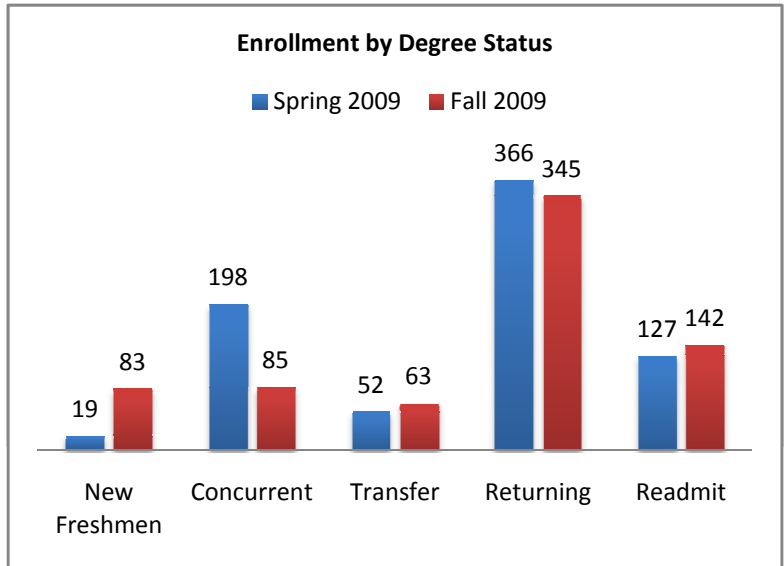
Headcount by Level

	<i>Spring 2009</i>	<i>Fall 2009</i>
Undergrad	363	437
Non-Degree	201	196
Concurrent Enroll	198	85
Total Headcount	762	718



Enrollment by Degree Status

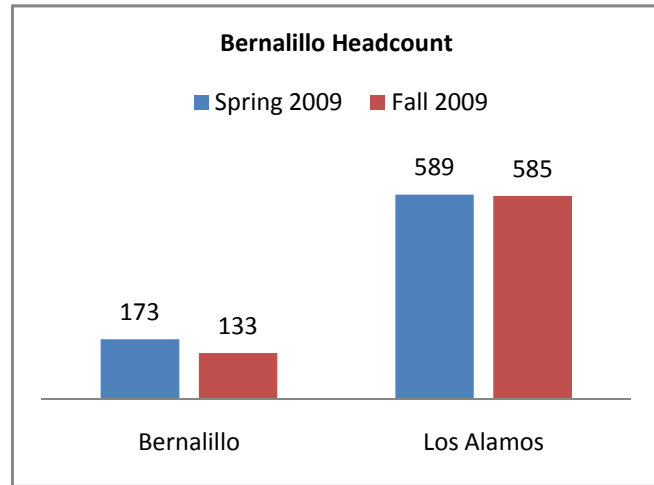
	<i>Spring 2009</i>	<i>Fall 2009</i>
New Freshmen	19	83
Concurrent	198	85
Transfer	52	63
Returning	366	345
Readmit	127	142
Total Enrolled	762	718



UNM-LA Student Profile Spring 2009 and Fall 2009

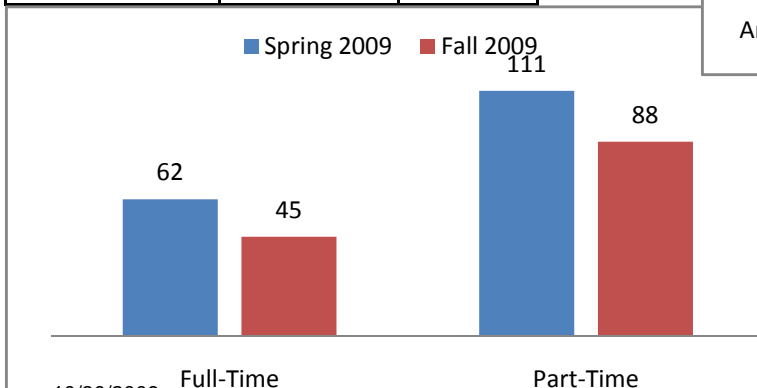
Bernalillo Headcount

	Spring 2009	Fall 2009
Bernalillo	173	133
% Off-Site	23%	19%
Los Alamos	589	585
Total	762	718



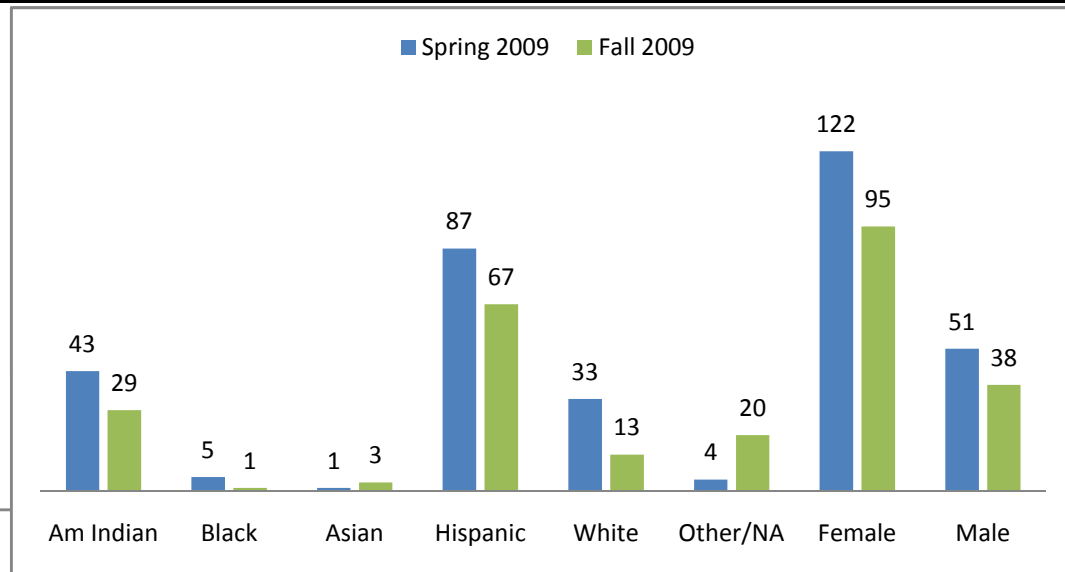
Bernalillo Full-Time & Part-Time Enrollment

	Spring 2009	Fall 2009
Full-Time	62	45
Part-Time	111	88



Bernalillo Headcount by Ethnicity

	Spring 2009	% of Total UNMLA	Fall 2009	% of Total UNMLA
Am Indian	43	73%	29	55%
Black	5	42%	1	14%
Asian	1	3%	3	12%
Hispanic	87	32%	67	25%
White	33	10%	13	4%
Other/NA	4	9%	20	19%
Female	122	27%	95	22%
Male	51	17%	38	13%
Total	173	23%	133	19%



UNM-LA Student Profile Spring 2009 and Fall 2009

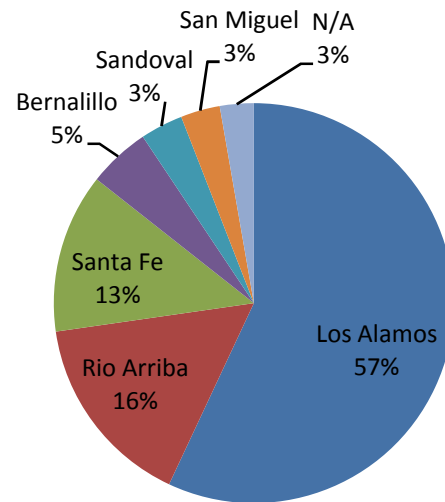
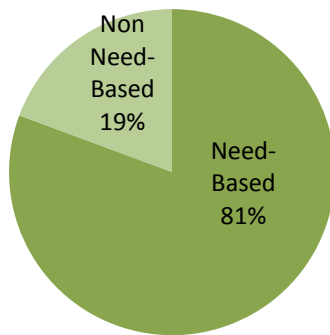
UNMLA Scholarships Awarded in Spring 2009 & Fall 2009

Scholarship Type	Spring 2009		Fall 2009		Total	
	Amount	Students	Amount	Students	Amount	Students
Need-Based	\$ 45,265.50	14	\$ 86,120.00	37	\$ 131,385.50	51
Non Need-Based	\$ 9,116.15	24	\$ 22,377.29	35	\$ 31,493.44	59
Grand Total	\$ 54,381.65	38	\$ 108,497.29	72	\$ 162,878.94	110

UNMLA Scholarships Awarded by County

County	Need-Based		Non Need-Based		Total	
	Amount	Students	Amount	Students	Amount	Students
Los Alamos	\$ 76,710.00	28	\$ 16,055.75	35	\$ 92,765.75	63
Rio Arriba	\$ 19,456.00	9	\$ 6,233.42	9	\$ 25,689.42	18
Santa Fe	\$ 17,146.00	7	\$ 3,880.05	8	\$ 21,026.05	15
Bernalillo	\$ 8,143.50	2	\$ -	0	\$ 8,143.50	2
Sandoval	\$ 3,197.00	3	\$ 2,431.00	6	\$ 5,628.00	9
San Miguel	\$ 5,175.00	1	\$ -	0	\$ 5,175.00	1
N/A	\$ 1,558.00	1	\$ 2,893.22	1	\$ 4,451.22	2
Grand Total	\$131,385.50	51	\$ 31,493.44	59	\$162,878.94	110

Scholarships by Type

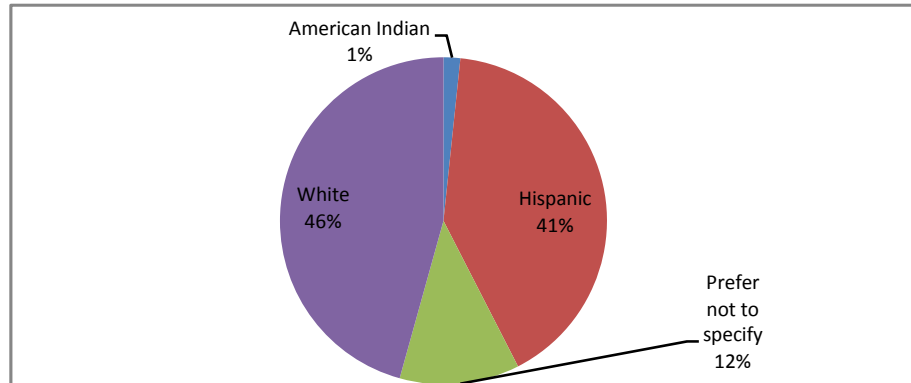
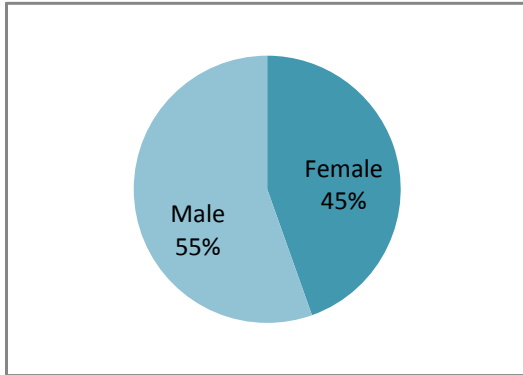


Scholarships by County of Residence

UNM-LA Student Profile Spring 2009 and Fall 2009

UNMLA Scholarships Awarded by Gender & Ethnicity

Ethnicity	Female		Male		Total	
	Amount	Students	Amount	Students	Amount	Students
American Indian	\$ -	0	\$ 2,675.00	1	\$ 2,675.00	1
Hispanic	\$ 38,920.52	28	\$ 27,558.50	15	\$ 66,479.02	43
Prefer not to specify	\$ 15,700.00	7	\$ 3,609.50	3	\$ 19,309.50	10
White	\$ 24,411.40	14	\$ 50,004.02	42	\$ 74,415.42	56
Grand Total	\$79,031.92	49	\$83,847.02	61	\$162,878.94	110



UNMLA Scholarships Awarded to Los Alamos County Residents Spring 2009 & Fall 2009

Ethnicity	Need-Based		Non Need-Based		Total	
	Amount	Students	Amount	Students	Amount	Students
Hispanic	\$ 16,660.00	5	\$ 2,831.60	5	\$ 19,491.60	10
Prefer not to specify	\$ 14,854.00	4	\$ 2,284.50	6	\$ 17,138.50	10
White	\$ 45,196.00	19	\$ 10,939.65	24	\$ 56,135.65	43
Grand Total	\$76,710.00	28	\$16,055.75	35	\$ 92,765.75	63

