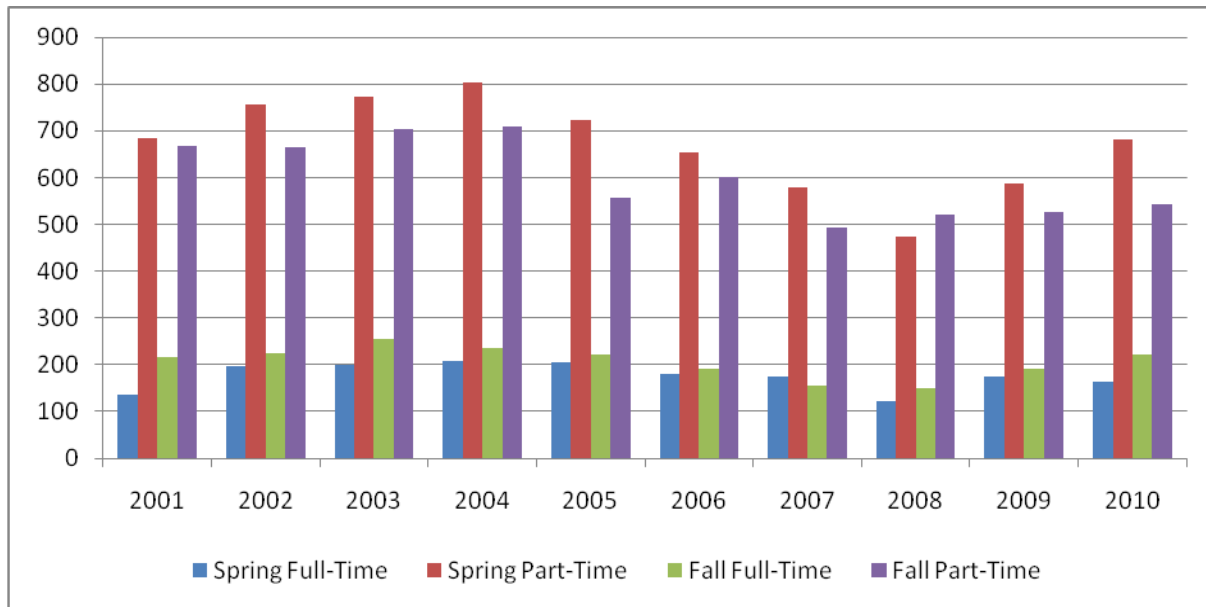


**SIGNIFICANT DEVELOPMENTS - 2009-2010**

**OVERVIEW**

UNM-LA continued to meet its mission during the 2009-2010 academic year by providing quality education and training programs and services to students and communities along with appropriate support services. Despite the continuing uncertainty of employment levels at LANL, UNM-LA continues to find ways of meeting the needs of this community in transition.

During the 2009-2010 academic year UNM-LA’s fall and spring enrollments of students increased in credit courses over the previous academic year as is evidenced by the following charts:



*UNM-Los Alamos Annual Report  
July 1, 2009 to June 30, 2010  
Cedric D. Page, Ph.D., Executive Director*

<b>Spring Semesters</b>	<b>2001</b>	<b>2002</b>	<b>2003</b>	<b>2004</b>	<b>2005</b>	<b>2006</b>	<b>2007</b>	<b>2008</b>	<b>2009</b>	<b>2010</b>
American Indian	34	35	35	51	67	66	49	33	59	63
Black	4	5	3	5	3	3	5	1	12	15
Asian	27	21	22	18	25	25	26	26	29	25
Hispanic	274	334	372	393	373	322	282	205	271	320
White, Non- Hispanic	446	524	475	486	401	354	354	298	347	381
Foreign	7	7	20	11	9	9	7	9	10	15
No Response	26	27	46	49	50	56	31	25	34	28
Female	496	587	593	619	563	507	472	365	455	501
Male	322	366	380	394	365	328	282	232	307	346
Total Minority	339	395	432	467	468	416	362	265	371	423
<b>Total Headcount</b>	<b>818</b>	<b>953</b>	<b>973</b>	<b>1013</b>	<b>928</b>	<b>835</b>	<b>754</b>	<b>597</b>	<b>762</b>	<b>847</b>

<b>Fall Semesters</b>	<b>2001</b>	<b>2002</b>	<b>2003</b>	<b>2004</b>	<b>2005</b>	<b>2006</b>	<b>2007</b>	<b>2008</b>	<b>2009</b>	<b>2010</b>
American Indian	39	31	50	51	53	54	30	43	53	59
Black	3	6	8	3	2	3	2	6	7	9
Asian	31	24	21	25	23	22	23	26	26	19
Hispanic	323	351	358	380	320	302	246	231	267	304
White, Non- Hispanic	455	426	454	420	335	362	306	335	328	341
Foreign	5	13	14	12	10	10	11	8	10	11
No Response	27	39	54	54	37	40	30	22	27	20
Female	568	548	573	573	465	493	407	420	432	454
Male	315	342	386	372	315	300	241	251	286	313
Total Minority	396	412	437	459	398	381	301	306	353	391
<b>Total Headcount</b>	<b>883</b>	<b>890</b>	<b>959</b>	<b>945</b>	<b>780</b>	<b>793</b>	<b>648</b>	<b>671</b>	<b>718</b>	<b>767</b>

Following are highlights of the campus-wide achievements for the 2009-2010 academic year:

The University of New Mexico-Los Alamos has long been an integral part of Northern New Mexico. In addition to our central location in Los Alamos, we have a site in Sandoval County. We also offer educational services at a number of pueblos. UNM-LA has dual enrollment agreements with many high schools. This allows eligible high school juniors and seniors to take college level courses.

- UNM-LA provides high quality instruction to all our students. We offer 19 associate degrees and 15 certificates. Small classes make the difference for many students. UNM-

LA has a 9:1 ratio of students to instructor. This year, 30 students earned associate's degrees.

- A total of 33 students received AA/AAS degrees and/or certificates and 37 individuals received GEDs during 2009-2010. Of those GED students a total of 4 enrolled in post secondary programs at UNM-LA or UNM.
- A total of 76 students participated in the College Cornerstone Program designed to provide foundational skills in math, English, reading, science and academic skills to academically under prepared students.
- A total of 34 high school graduates and GED Recipients participated in the UNM-LA 2009 Summer Bridge program. Of those students, 20 subsequently enrolled at UNM-LA.
- A total of 306 high school students enrolled in courses for college credit this year. Of the total 306, 259 of those students earned credit at both UNM-LA and their public or charter high school while 47 of those students were home schooled students.
- Articulated dual credit classes continue to be offered at Los Alamos High School.
- Thirty-four 2009 high school graduates and GED recipients participated in the UNM-LA 2009 Summer Bridge program, which introduces recent graduates to the college experience.
- Seventy-six students participated in the College Cornerstone Program, designed to provide foundational skills in math, English, reading, science, and other academic skills to academically under-prepared students.
- Thirty-seven individuals received GEDs after taking Adult Basic Education courses at UNM-LA
- One hundred sixty-six enrollments were recorded in Bachelor and Graduate Programs at UNM-LA that offer live classroom, on-line and instructional TV courses at the upper division and graduate level in many subject areas.
- Fundraising events and campaigns brought in \$107,659.50 for the UNM-LA endowment and scholarship funds. UNM-LA offers 18 merit and need-based scholarships ranging from \$500 to \$3500 per year.
- UNM-LA provided goods and services in the amount of \$1,269,100.53 within its service area. Annual payroll expenditures of UNM-LA for the fiscal year ending June 2010 were \$3,216,566.24
- UNM-LA has 247 full-time and part-time faculty, staff and student employees. Seventy-two percent live in the tri-county area (Los Alamos, Santa Fe and Rio Arriba).

College Performance Measures:

UNM-Los Alamos is engaged in a number of accountability initiatives to measure our efforts at improving access and success of our students. We have established targets, implemented improvement strategies and developed reports to track progress on these performance measures. The measures listed below are submitted annually to the Legislative Finance Committee and the

NM Department of Finance and Administration. These measures for UNM-Los Alamos represent three-year average baseline data, targets for each indicator and the average for all NM branch colleges.

<b>Indicator</b>	<b>FY1- Actual</b>	<b>FY10 Target</b>	<b>Branch Average</b>
<b>Academic Quality</b> - Percent of Students Taking Nine or More Credits on Entry Who are Successful After Three Years	69%	56%	53.5%
<b>Economic Impact</b> - Percent of Graduates Placed in Jobs in New Mexico	85.6%	45%	72.1%
<b>Economic Impact</b> - Percent Graduates Placed in Jobs & Continuing Education	92%	66%	88.8%
<b>Accessible &amp; Affordable Education</b> - Percent Ethnic Minority (White) of Total Enrolled	47.6%	53%	---
<b>Accessible &amp; Affordable Education</b> - Percent Ethnic Minority (Asian American) of Total Graduates Based on Service Area Profile	2%	4%	---
<b>Service to New Mexicans</b> - Students Enrolled in College Programs	ABE-448* SBDC- 434*	ABE-450* SBDC- 280*	--- ---
<b>Efficient &amp; Effective Use of Resources</b> - Percent of Programs Having Stable or Increasing Enrollments	57.6%	65%	72.7%
<b>Student Persistence</b> - Percent Retained (Fall to Spring)	80.9%	77%	76.2%
<b>Graduation Rate</b> - Percent of fulltime, first-time, degree-seeking students who complete a degree/certificate in 150% of time	56.9%	55%	14.2%

\*ABE=Adult Basic Education; SBDC=Small Business Development Centers (UNM-LA manages two centers in Los Alamos and Sandoval Counties)

## **OFFICE OF THE EXECUTIVE DIRECTOR**

### Small Business Development Centers

- Sandoval County SBDC activity:
  - Equity Financing: 38 investments for a total of \$497,900
  - Loans: 9 for total of \$391,700
  - Business:
    - Startups - 40
    - Expansions - 0

- Jobs Created: 74
- Jobs Retained: 0
- Los Alamos County SBDC activity:
  - Equity Financing: 1 investment for a total of \$25,900
  - Loans: 0
  - Business:
    - Startups - 8
    - Expansions - 0
  - Jobs Created: 15
  - Jobs Retained: 8

### Communications and Marketing Services

The department consists of one employee, Senior Public Affairs Representative.

- Took over as webmaster of the UNM-LA website in spring 2009 and created a home page with changing news items and a revolving picture banner. The site now tracks visitors as a tool for testing outreach initiatives as well as for information on site visitors.
- Developing a page for each program we offer with faculty to provide information about our degree programs and serve to attract students to the programs as well.
- Increasing UNM-LA's Internet presence this year through the creation of a Wikipedia page and a *Facebook* page for the campus. The *Facebook* page is regularly updated with information on campus events and news.
- Regularly monitor mentions of UNM-LA on the Web through use of Google tools.
- Created its first marketing plan in 2009 and continued with a new plan for 2010.
- Continue to produce print advertising for newspapers and other publications, as well as radio spots.
- The annual publication Facts and Figures, a "mini annual report" that has been printed for many years, was replaced by a new publication called The UNM-LA Report Card that serves, not only as an informational piece, but as a marketing tool.
- New brochures for the Public Safety Concentration of the Liberal Arts Associate degree and an eight-page booklet for the Applied Technologies program are currently in production for publication within the next month.
- A new guide for helping faculty to promote their own classes and programs and to work with my office effectively was published this year.
- Story publication in the Los Alamos Monitor continues to be extremely high and we have had a number of positive stories on the front page. UNM-LA has a 20-minute show on the first Tuesday of each month on station KRSN, in addition to appearances of staff and faculty on news programs. With the help of the Bernalillo Site staff, a bus commercial and regular articles in the Bernalillo School District Newsletter help to increase awareness of our Bernalillo programs.

- Produced a brochure for the 2010 mil levy campaign, coordinated radio interviews and PSAs, advertisements, newspaper stories and other outreach.
- Published the monthly on-campus publication “Stall News.” I produced five class schedules (3 for main site and two for the Bernalillo site) that included a number of stories and informational pieces on the campus as well as the schedule of classes.
- Designed a new UNM-LA Catalog and produced numerous posters, flyers, brochures, web pages and other publications for various programs and campus events.
- Organized the staffing for tables at a number of community events, including The Los Alamos County Fair, Earth Day, Los Alamos ChamberFest, and several times at the Los Alamos Farmer’s Market.

#### Information and Telecommunications Services

- Computer Center in Room 306 reconfigured as new ITC with 15 workstations, Promethean Interactive Whiteboard, and a variety of other classroom technology
- Proposed new site for Encanto Supercomputer Gateway to be installed December 2010
- New Wiring Room for data and voice with enough expansion space to accommodate cabling and network equipment for all of Building 6
- Classrooms with Macintosh and Windows workstations and Interactive SMART boards
- Lobby with 4 workstations and a printer for use by students as well as workspace for students with notebook computers or other wireless devices
- Helpdesk area typically manned by student employees
- Room 624 reconfigured as an isolated networking lab with 12 workstations for instruction in network configuration/security
- Implemented online Helpdesk system for IT and Facilities trouble tickets
- Implemented online computer inventory tracking system
- Organized a massive delivery of obsolete equipment to UNM Albuquerque Surplus Inventory including over 100 computers, monitors, printers, etc.
- Implemented easily accessible shared drive space for staff and faculty on storage server

#### **CAMPUS RESOURCES DEPARTMENT**

##### Overall

- Planning, facilitation and hosting of the Anomalous Absorption Conference 2010 in Snowmass, Co. in partnership with physicists from Los Alamos National Laboratory.
- Created efficiencies and contributed to sustainability by converting processes from paper to electronic formats, such as forms online, notifications by email and web based requests, including the use of the S drive to save and store records.
- Expanded the use of credit cards procurement to reduce procurement costs.
- Continued elimination of surplus property and archiving of required historic documentation.

- Established coverage schedule for key functions including cross training to ensure excellent customer service despite budget reductions and unfilled vacancies.
- Secured \$50,000 operational funding from the Los Alamos County directed to IT staffing and support functions.

#### Bookstore

- Converted operations from a traditional textbook bookstore to an on-line textbook provider.
- Provided ongoing support to facilitate dual credit book purchases for all high schools.
- Removed obsolete inventory from financials.

#### Food Services

- Secured a local food service operator via a licensing agreement for the academic year.

#### Housing

- Maintained 50% occupancy during the fall and spring semester and 100% during the summer months.
- Initiated discussions with the Los Alamos County to secure financing for renovations that would create affordable housing and support the County's revitalization plan.
- Upgraded kitchen, flooring and furniture in many units.
- Re-roofed both complexes and re-built one boiler.
- Established new partnerships for housing summer interns at Bandelier National Monument and from the National Nuclear Security Administration

#### Facilities

- Managed capital projects for construction of the Arts Lecture Hall in building 5 and complete renovation of classroom spaces into computer labs in the Flow Science wing.
- Secured Los Alamos County funding support of \$100,000 for the Arts Lecture Hall and computer lab renovations.
- Managed major insurance claim from hail damage resulting in new roofs for all campus buildings and associated interior repair work.
- Hosted semi-annual Safety Facility Audits to assist in the continued effort to address safety issues.
- Replaced outdated signage and campus directional information for many campus buildings.
- Reconfigured the woodworking classroom with a mock roof to facilitate instruction in solar equipment installation.
- Reconfigured an existing computer lab as the 21<sup>st</sup> Century Classroom with high-tech equipment to provide instruction to teachers.

## **DEPARTMENT OF INSTRUCTION**

### Grants

- Michelle Hall was contracted by the New Mexico Consortium to train Irina Alvestad and Kate Massengale on grant writing for National Science Foundation grants in Technology Education and Cyber Security.
- LANL Technician Training program development grant of \$100,000 – second year.
- WIRED scholarships for STEM Programs, \$14,000, plus \$4,000 for curriculum development – second year. By the end of the grant we graduated 12 through STEM degree programs, and 139 students in approved courses.
- Broadband Initiative grant for training internet users across the state was awarded to state Dec. 2009, contract with UNM-LA signed in May 2010. UNM-LA is partnered with State Library. Eva Artschwager was named Training and Development Coordinator for this program, and Lynne Williams and Carol Furchner developed training modules in “Selecting, Installing, and Maintaining a Computer” and “How to Take an Online Course” for use in this program.

#### Outcomes Assessment

- Report on General Education Core Curriculum for NMHED for 2008-2009 was completed and submitted Oct. 30 with reporting in all 5 areas, and 15 courses assessed, far more than UNM-A.
- Assessment data was collected and compiled from all mathematics courses each semester, with 100% of math faculty participating
- As a result of OA, math department began discussions and plans to modularize its developmental math courses and present them in a new way.
- English department performed OA on all courses except Creative Writing
- Science department increased participation among faculty on outcomes assessment.
- In the Fine Arts department, all Art Studio and all Art History classes participated in OA.
- Programmatic Assessment is under construction
- Losing our primary Digital Media Arts instructor (Ted Greer) and Division Head (Lee Bollschweiler) has delayed programmatic assessment in DMA.
- Programmatic assessment plan for Web Technology submitted.

#### Instructional Technology Center

- Moved to a new and greatly expanded location in Room 306, with 15 computers and a new Promethean Interactive Board
- Offered several workshops to faculty (organized by Lynne Williams, Bill Gilson, and Carol Furchner) including Thinking Outside the Classroom–use of multiple technologies in teaching (2) and The Green Classroom–using WebCT to put paper handouts online
- Planned and organized The 21st Century Classroom four-day workshop for high school and middle school teachers from Bernalillo, Espanola, Los Alamos, and

Pojoaque, for July 2010 Co-sponsored and funded by New Mexico Technology Council and Los Alamos National Laboratories

- Provided individual support for instructors learning to use WebCT, Smart Boards, Classroom Capture, Symposium, classroom media centers, and other classroom technologies
- Computer lab shifting affected the teaching of Mac classes after the break-in of the Mac lab 516A. More computer lab shuffling occurred for PC labs (504 & 506) due to new construction and again for the Mac lab (516A) due to water damage.

### New Programs

- Applied Technologies AAS degree became official in catalog fall 2009, with three concentrations – manufacturing, nanotechnology, and electro-mechanical.
- A fourth concentration to the Applied Technologies degree began spring 2010 solar photovoltaic and solar thermal.
- Classes began Nov. 9, 2009, for our new non-credit professional training program, the New Mexico Center for Language Access, which provides multilingual interpreter training in court and medical interpreting, online. It is the first of its kind in the nation. UNM-LA did this in partnership with the NM Administrative Office of the Courts, Central New Mexico Community College, and Dona Ana Community College.

### New Partnerships

- UNMLA called its first Advisory Council meeting for the NMCLA program January 2010.
- NMCLA has worked with the Justice System Interpreting Resource Partnership, including Administrative Office of the Courts, CNM, and Dona Ana CC.
- We have also partnered with DOE and NM Environmental Dept.
- We have worked on a shared DOL grant (WIRED) with CNM, SFCC, and SIPI.
- We are working with NM Consortium, Los Alamos Commerce Development Corporation, and others on exploring partnerships in workforce training, curriculum development.

### Curriculum Updates

- New curriculum was submitted and approved for the AAS degree in Applied Technologies to include a concentration in Solar Technology
- Pre-Professional Health Sciences Degree and Certificate were created and approved for inclusion in the catalog
- Kay Willerton participated as a member of the mathematics articulation state-wide task force.
- Kay Willerton participated in the HED articulation task force

- Oksana Gerlits participated in the state-wide Engineering Task Force
- Susan Schauer and Leslie Dendy participated in the state Biology task force
- Lee Bollschweiler, Monique Morin and Lynne Williams participated in the state CS task force
- Oksana Gerlits worked with EU to create gathered 2 cohorts in the pre-engineering program: ECE and ME concentrations
- Course rotations of DMA, Web Technology, and Technical Support developed.

#### Scheduling

- UNM-LA worked on reduced cancellations and a new policy around cancellation decisions. We made significant progress, and instituted course rotations again.

#### Online/Web Development

- Anna Durakawicz developed and taught Math 121 online in the spring and summer semesters.
- Susan Schauer developed BIOL 237 as an online class. It will be piloted in Fall 2010
- Online course offerings increased 35% from academic year 2008-2009 to 2009-2010.
- Modified and enhanced process for obtaining student feedback in online courses.
- Web pages for all of our AA, AS and AAS programs were designed and implementation of making them live was begun

#### Developmental Education

- Kate Massengale and Kay Willerton attended meetings held by the HED on developmental education summer 2009.
- Lee Bollschweiler held meetings to discuss revision of ARSC 198 and staffing issues.
- Kate Massengale hosted the Cornerstone Meeting, Sept. 2009 – guest speaker, Joel Nossop of UNM-A.
- Michelle Worley attended the Developmental presentations at Governor's Education Conference, Sept-Oct. 2009.
- New UNIV 101 was designed in spring 2010 and rolled out in summer 2010.

#### Dual Credit

- Increased offerings and participation. Offered classes at Los Alamos High School, Pojoaque Valley High School, and Bernalillo. We have career pathways articulated with classes at LAHS and PVHS.
- Dual Credit website went live fall 2009.
- Mickey Marsee served as Dual Credit Coordinator Jan 2010 – May 2010.

#### Fine Arts

- Through summer and fall of 2010, 209 students have taken courses in Art Studio, Art History, Music and Theatre.
- Dr. Greg Schneider teamed up with librarian, Dennis Davies-Wilson and taught a course in Opera that was enormously popular. The class attended live operas in Santa Fe that featured pre-opera presentations by experts in the field. Sessions in Los Alamos featured recordings, class discussion and analysis of specific operas as well as history of the opera. Student enrollment in this summer session class continues to climb.
- Visual Arts sponsored a number of student exhibitions of sculpture, ceramics, painting and drawing on campus last year. These exhibits of Fine Art give students the opportunity to display their artwork and engage the UNM-LA community with their work and developing skills in this exciting field of study.
- UNM-LA student Emily Wilde continues to scan the entire collection of Art History slides (over 2,000 images) and convert these scans to high resolution TIF files, which are then stored on DVD's.

#### Community Connections

- Collaborated with LANL and established the Manufacturing Student Rotation Internship Program for Applied Technologies students
- UNMLA organized and hosted Advanced Technology Center (ATC) Strategic Planning Session with community leaders
- Presented poster entitled *STEM Programs at UNMLA* at Community Leaders Breakfast, October 27, 2009
- Presented poster describing the Applied Technologies degree program at Community Leaders Breakfast, January 27, 2010
- UNMLA obtained approximately 100 KeyTrain licenses as a donation from LANL
- Several faculty members participated with Student Services in College Days Presentation
- Participated in Earth Day presentations hosted by PEEC.
- Participated in the Next Big Idea hosted by Los Alamos County

#### Recruitment and Scholarships

- Oksana Gerlits developed and implemented science hands-on activity/presentation component in College Day activities
- Established Native American Scholarship Program for Applied Technologies sponsored by DOE/NNSA

#### Other

- Revised course rotation to better meet various programmatic course rotations in other disciplines

- Hosted "Go Mythic: Student Curated Exhibits" at UNM-LA Library Fall 2009
- Mickey Marsee developed community film series "UNM-LA Monster Movie Thursdays" which was tied to Comparative Lit 224: The Monster Within.

## **Library**

### **Staff**

- Completed search for new LIS II, fall 2009.

### **Bibliographic Instruction**

- Provided Bibliographic Instruction to 49 groups / 689 individuals
- 42 class visits to the library / 701 participants
- Began creating online information literacy modules for English 101 using Camtasia.
- Created online sessions for English 101 and 102 using Classroom Capture, fall 2009.
- Created online interactive electronic database tutorials for English 101, spring 2010.

### **Collection**

- 22,332 cataloged items in collection
- Access provided to 220 online databases
- Began Science book weeding / replacement project

### **Public Services**

- 2,923 items checked out
- 6,148 items circulated
- 65 borrowed interlibrary loans
- 88 loaned interlibrary loans

### **Equipment**

- All staff and public computers and peripherals were replaced, November 2009.
- White boards in study rooms were replaced, August 2009.

### **Exhibits**

- "Harry Potter's World: an Academic View of Science, Medicine, and Magic during the Renaissance," July 7 – September 17, 2010.
- "Flora and Fauna of New Mexico," February 1 – May 14, 2010.
- "Greek Myth Heroes," November 3 – December 15, 2009.

### **Campus and Community Outreach**

- Appeared on "UNM-LA Today," KRSN Radio, July 6, 2010.
- Appeared on "UNM-LA Today," KRSN Radio, June 8, 2010.
- Collaborated with Mesa Public Library with "Harry Potter: Science, Magic and Medicine in the Renaissance" exhibit and opening event, summer, 2010.
- Created library activity for participants of the Si Se Puede / Gear-up conference held at UNM-Los Alamos, May 13, 2010.
- Participated in "College Days" outreach with a scavenger hunt activity in the library for

15 groups of students, serving 347 students.

#### Adult Learning Services

The UNM-Los Alamos ABE program has enjoyed a relatively quiet and productive year compared to the few years prior. There has been little turnover in staff positions, and outlying sites were brought back into the fold. Staff worked hard to clean up the program database and enter data correctly. Through these efforts, the program showed an increase in enrollment from 315 in FY2008-09 to 448 in FY2009-10.

Despite cuts in funding, the program offered students comprehensive and creative ESL and GED classes. A more structured orientation to the GED program was developed and staff are continuing to find ways to make that program more meaningful to students.

#### Los Alamos Site

- Five GED students made the 3000 Club, all scoring over 3000 on their GED exams.
- One of the 3000 Club was an inmate in the Los Alamos County Detention Center at the time he took the GED. He scored so well, he was asked to be the speaker at the GED graduation ceremony. He started classes at UNM-LA in the fall of 2010.
- One ESL student passed her citizenship test in spring 2010.
- ESL field trips included visits to the Santa Fe Opera, El Rancho de las Golondrinas, district court, and a high school civics course, where ESL students served as jury in a mock trial.
- Students in the summer ESL class each took turns becoming the teacher, sharing their expertise/knowledge in areas like interior design, tapas cuisine, beauty/cosmetics, and the rich vs. poor aspects of Chinese society.
- The spring 2010 intermediate/advanced ESL class published a newsletter, which is featured on the UNM-LA ABE web page.

#### Bernalillo Site

- In September, ESL morning classes visited the New Mexico State Fair with the Even Start Preschool Program.
- Two families purchased homes.
- In May, 12 students attended the GED graduation ceremony at UNM-Los Alamos. Two attendance award ceremonies took place, one in December 2009, and the other in May 2010.

#### Delancey Street

- Two 2008-09 GED graduates at Delancey Street are now teaching the GED classes there, and very successfully. Five more of their students passed the GED in June 2010.

#### Community Education & Specialized Training Services

- Increased number of joint credit/non-credit course offerings
- Utilized Work Force Development monies to diversify workshop/course training

- Altered format for young children in art, computer technology, science and writing courses to increase enrollment
- Altered format for Specialized Training to increase enrollment
- Added Multilingual Interpreting and Translation Certificate program and offer state-of-the-art training for a variety of career paths; court and medical interpreting, bilingual employees (nurses, clerks, correction and patrol officers), and for already certified or working interpreters through continuing education options and refresher courses. The New Mexico Center for Language Access is a professional program created in partnership with the New Mexico Administration Office of the Courts, Central New Mexico College, Dona Ana Community College, New Mexico Hospital and UNM-Los Alamos
- Added Computer Networking Training through the Fast Forward NM Aid program
- Development of the student registration in the cloud computing environment for the Computer Application Training

## **STUDENT SUPPORT SERVICES**

UNM-Los Alamos Student Services continued to provide quality services and programs for students and the overall UNM-Los Alamos campus community.

### Recruitment and Retention

- Personally visited 13 Northern New Mexico high schools and 2 middle schools.
- Participated at 10 College Fairs.
- Attended 8 Community Events/Organizations.
- Personally attended 1 Pueblo event.
- Hosted 2 Pueblo Department of Education visits to the UNM-LA campus.
- Hosted 5 College Days for Elementary, Middle and High School Students from Northern New Mexico: 338 students and counselors attended from 11 schools.
- Facilitated/hosted 1 all day GEAR UP conference at UNM-LA.
- Continued regular communication with the Home School Community
- Met with prospective students and families to discuss opportunities at UNM-LA
- Revised New Student Orientation so all new students in degree programs participate in individual orientations during their first mandatory advisement sessions in addition to participating in group New Student Orientation.
- Hosted 93 students, family members/friends at 2 New Student Group Orientations
- Hosted 4 Campus, Community, and College Resource Fairs for UNM-LA Students
- Retained 87% of Summer Bridge students at UNM-LA or UNM Main campus in Fall 2010
- Promoted student retention and supported faculty by providing Early Alert services to target students with academic difficulties and advise them in success strategies.
- Promoted student retention by coordinating and teaching various sections of new student

success course UNIV 101.

#### Advisement

- Participated in College Cornerstone Committee meetings to interact with faculty and to keep abreast of faculty expectations and changes in policy and procedures to better meet students' needs.
- Provided advisement, registrar and financial aid services to Bernalillo and Cuba sites.
- Participated in UNM advisors network via bi-annual advisors institute.
- Continued "Off-Hours Academic Advisement by Appointment" to service working students finding it difficult to meet with advisors during normal working hours.
- Continued "phone advisement" as a convenient method for returning students to fulfill mandatory advisement obligations.
- Established "e-mail advisement" as a convenient method for returning students to fulfill mandatory advisement obligations.
- Established "partner/group advisement" as a convenient method for two or more students wishing to meet together with an advisor to do so and fulfill mandatory advisement obligations.
- Organized general Transfer Days in which UNM Main Campus advisors meet with UNM-LA student on UNM-LA campus.
- Organized Engineering Transfer Days in which UNM Main Campus Engineering advisors meet with UNM-LA Engineering students on UNM-LA campus.

#### Registrar

- Actively participated in regular meetings with UNM registrar's from all campuses.
- Registrar assigned as local Veteran Certifying Official. As a result of the implementation of a new GI Bill, there was a 90% increase in VA enrollment. 34 VA students were continuously advised and monitored in the 08-09 year.
- Implemented new federal guidelines for collecting race and ethnicity information.
- Irene Martinez, Enrolment Representative, cross trained with financial aid in order to assist students with the financial aid application process, navigating financial aid tools in LoboWeb, and applying for work-study.
- Continue to scan and archive admission, registration, and financial aid records.
- Recognized by UNM Albuquerque and the New Mexico Higher Education Department for maintaining minimal error data processing.
- Registrar attended and presented at the RMACRAO (Rocky Mountain Association of Collegiate Registrars and Admission Officers) annual meeting.
- Coordinated successful Convocation Ceremony in May.

### Financial Aid

- Provided all services associated with a financial aid office such as processing of applications, awarding of funds, disbursements of funds, evaluation of academic progress and administered work-study and scholarship programs.
- Continued to promote UNM-LA Bridge to Success scholarship through visits to Northern New Mexico Public Schools in addition to school visits to UNMLA.
- Kept abreast of financial aid policies and procedures by attending UNM meetings.
- Attended Financial Aid Boot Camp in Albuquerque.

### Bernalillo Education Center

With increased partnerships and collaborations with Sandoval County Tribal Governments, City Municipalities, Public Schools, Non-profit organizations, Higher Education Institutions, etc., the Bernalillo Education Center has experienced significant increases in enrollment. These partnerships and collaborations have increased services to area students, as well as recruit local instructors, enhance dual credit opportunities for high school students, and create an overall sense of community within our Center population.

The Bernalillo Campus aims to provide services to Sandoval County, and surrounding area, current and prospective students. The Bernalillo campus currently serves Bernalillo, Rio Rancho, V. Sue Cleveland, Jemez Valley, Walatowa Charter and Cuba High Schools. Frequent contact is maintained throughout the year with staff, faculty and administration from each school. In addition, extensive community-wide outreach is conducted, in addition to aggressive retention activities.

### Recruitment and Retention

- Personal visits to six high schools (approximately 30 visits total)
- Attended five college fairs
- Hosted Dual Credit Open House for potential Dual Credit students
- Attended Bernalillo High School Registration promoting Dual Credit
- Met and partnered with Sandoval County organizations in order to promote UNM-LA (approximately 10 organizations)
- Entered a float promoting UNM-LA in the Bernalillo Christmas Parade
- Held faculty and new student orientations
- Met with several Tribal Education Directors in order to promote community-specific courses, in conjunction with UNM-West
- Worked with Zia and Jemez Pueblos and Junior Achievement of New Mexico in offering ARSC198/UNIV101, Introduction to Undergraduate Studies to Zia Pueblo students. Course incorporated cultural and linguistic elements into pre-existing curriculum
- Increased amount of Summer Bridge students, planned UNM-Albuquerque orientation with College Enrichment Program (CEP)
- Produced course schedule newsletter stories

- Submitted advertisements in the Town of Bernalillo water bill newsletter showcasing UNM-LA programs
- Worked with UNM-LA ABE office in establishing seamless transition from ABE to credit courses. Further, logistics established in students taking pre-developmental courses
- Emailed UNM-LA/Bernalillo advertisements to ADVISE-L listserve promoting core courses
- DARS (Degree Audit Reporting System)
- Updated all Associate and Certificate programs in DARS system
- Attended DARS encoding meetings
- Processed all approved substitution requests
- Work with advisors in making corrections to encoding
- Work with UNM-Albuquerque DARS staff

<b>SIGNIFICANT PLANS AND RECOMMENDATIONS - 2009-2010</b>
--

#### **OFFICE OF THE EXECUTIVE DIRECTOR**

- Successfully secure funding to offset legislative budget cuts
- Implement collaborative efforts with NM Regional Development Corporation, U.S. Department of Energy, *Innovate+Educate* (NM), Eight Northern Indian Pueblo Council, and New Mexico Technology Council.
- Implement the UNM-LA 2009-10 Marketing Plan
- Complete installation of 'Gateway' facility and initiate services to area businesses and schools
- Complete the upgrade of UNM-LA internal phone system
- Increase the effectiveness and efficiency of the facilities services department
- Explore the reorganization of the Student Services department

#### Communications and Marketing

- Continue to improve website
  - Continue to work on creating a web page for each degree program. Develop a Community section of the website and continue to improve individual pages.
  - Revise Bernalillo site pages on the website. Create a Community section for the website.
  - Re-design the navigation bar and the homepage of the website.
  - Develop a plan for re-designing the UNM-LA website.
- Continue to increase Web presence
  - Begin posting videos on *YouTube* and photographs on *Flickr* portraying campus life, events and programs.

- Begin advertising UNM-LA degree programs on the Internet, beginning with *Facebook* and perhaps expanding to *Google*.
- Create two movie theatre commercials for Espanola and Los Alamos that are geared towards these two very different communities. The Los Alamos version will stress how the campus serves the community through such programs as Dual Credit as well as advertise specific services and programs. The Espanola version will focus on UNM-LA programs and their quality, and address the advantages of starting a college education at UNM.
- Create a marketing plan specifically for Community Education including a section that addresses the potential and need for community education at the Bernalillo Education center.

#### Information & Telecommunications Services

##### NMCAC Encanto Supercomputer Gateway

- Installation in the ITC in December 2010
- Provide access for K-12 schools, local businesses and organizations, and our own students to teleconferencing, training, and 3-D visualization.

##### REDI Net Fiber Connection

- Anchor Institution for REDI Net proposed installation 3<sup>rd</sup> quarter 2011
- Significant increase in bandwidth and decrease in cost

##### Updates to Voice/Data Systems, Network Infrastructure, and Server Configuration

- Work closely with UNM Albuquerque IT staff to propose a plan for the eventual complete replacement of our core network and telephone systems over the next few years
- Plan and implement a more robust backup/disaster recovery system
- Test a variety of printer management solutions to prevent waste and hold students accountable for excessive printing
- Continue working with UMN Albuquerque IT to prepare our network to join their Active Directory structure in late 2011 or 2012

#### **CAMPUS RESOURCES DEPARTMENT**

##### Overall

- Work with campus to continue progress to replace administrative processes with a paperless solution, including IPRs and travel reimbursements.
- Provide ongoing instruction to faculty and staff on equipment that supports the paperless environment, creating electronic documents and/or electronic transmissions for greater efficiency.

- Manage budget reductions imposed by the state to maintain fund balances at recommended reserve levels and continue current level of services.
- Fund anticipated increases in utility and fringe benefit costs.
- Meet matching funds requirement for various contract and grant activities.
- Develop a facilities' master plan.
- Closeout the capital improvement project for the Arts Lecture Hall and the Flow Science Wing.
- Manage remaining repairs associated with the insurance claim for hail damage.
- Respond to rescission requirements as determined by legislative action.
- Initiated telecommunications replacement with overall assessment by Main Campus IT. Phone configuration is outdated and all voicemail capabilities lost via a summer electrical storm.

#### Food Services

- Find a new outsource provider for campus with a better quality product and services.
- Expand catering options for outside organizations to host events at UNM-LA.

#### Bookstore

- Continue to improve delivery to students via the online provider and facilitate dual credit procurement issues with partnering high schools.
- Continue to offer basic supplies and snacks as a convenience to campus.
- Redeploy personnel to facility rentals and promote the campus as a viable location for many community events.

#### Student Housing

- Secure capital funding from Los Alamos County to enable significant renovations to housing units.
- Determine scope of improvements and timeline to complete necessary renovations.
- Improve landscaping and grounds to create a more inviting curb appeal.

#### Facilities

- Work with New Mexico Arts, Art in Public Place Program for a commissioned piece of art to be placed on campus outside the Arts Lecture Hall.
- Create emergency response procedures in conjunction with other local agencies and develop educational materials for distribution on campus.
- Make the work order process electronic and reliable.
- Develop a long-term deferred maintenance schedule and implement ongoing maintenance schedules for general building upkeep and for safety compliance in conjunction with Main Campus Facilities Department.
- Complete signage replacement.

- Complete work with insurance claim to repair and replace damage as sustained by July hail storm.
- Expand Campus Recycling Program to encourage greater participation.

## **DEPARTMENT OF INSTRUCTION**

In general, Instruction has plans to work through an exhaustive process that identifies our program vision, mission, and goals but goes further to identify and strategize about needed resources, weaknesses that must be addressed, and funding issues. Meetings are scheduled for both fall and spring this next year.

### Programmatic

- Development of Environmental Science Initiative, and pursuit of funding.
- Begin work on creating an AS in Nursing.
- English department will **create** Learning Communities with English and other Humanities courses
- Continue building cohorts of engineering students
- Fine Arts is now offering the recently approved course, Rock and Roll Appreciation (MUS 142) during the Spring of 2011

### Workforce Training

- Development of non-credit workforce training in Environmental Science.
- Development of non-credit workforce training in basic reading, writing and math skills.
- Development of the additional curriculum for the New Mexico Center for Language Access.
- Partnerships between NMCLA and University of New Mexico Hospital and University of New Mexico Law School
- Partnership between NMCLA and Consortium of Court Interpreters (representing 40 states).

### Grants

- Application for 2-3 ATE grants with help from NM Consortium, in order to establish a foundation for an Advanced Technology Center. Educational Technology
- Put Math 150 and Math 180 online.
- Rebuild and update ITC website
- Complete and continue updating eLearning wiki and website
- Offer several workshops on using various technologies to support and enhance education in and outside of the classroom
- Obtain eInstruction, Mobi system for ITC
- Update software on computers in ITC

- Offer 21st Century Classroom Workshop again in Summer 2011
- Pilot the new modularized version of Math 100

#### Website Work/Program Marketing

- Create a web page for each program.
- Post all syllabi for each semester.
- Create standard safety forms for all lab classes and post them to the web.

#### Assessment

- Increase participation in OA in Science, Fine Arts, and Applied Science.
- Create a programmatic assessment plan for our AAS in Applied Technologies and at least one programmatic assessment plan for each curriculum area.

#### Facilities/Safety

- Update and redo MSDS notebooks where necessary.
- Renovations to art studios to facilitate recruitment of students are in the planning stage and should help us attract even more students to the program

#### Software

- Upgrade to Adobe Creative Suite 5 was stalled when it turned out our current Mac computers can't handle the new version. We requested that the money be put aside for future purchase of the software once we have newer computers.
- Upgrading the PCs to Office 2010 and Windows 7 was requested. It was determined that we could do the Office 2010 upgrade, but the Windows 7 upgrade will need to wait for newer PC computers.

#### General Goals

- Identify appropriate grants and submit grants.

#### Library

- Update website
- Continue learning advanced features of Dreamweaver and continue re-design of the library website.
- Complete and implement English 101 Online Information Literacy Modules.
- Continue Science book weeding and replacement project.
- Work with Irina Alvestad to identify core library resources in support of Applied Sciences program.

#### Community Education and Specialized Training Services

- In conjunction with developments on credit side, facilitate development and delivery of non-credit workforce training in Environmental Science and solar technology.

- Update offerings in personal enrichment and professional development courses to Los Alamos and surrounding communities
- Provide new personal enrichment and professional development courses to Bernalillo and surrounding communities, including ECommerce and Computer Game development.
- Provide fun-quality courses to the grade school level children to the Los Alamos and surrounding communities
- Continue high-quality customer service to clients, instructors, staff and faculty through Community Education, Specialized Training and Computer Application Training Services
- Continue to provide multilingual interpreting and translation certificate programs in justice system and medical interpreting online courses through the New Mexico Center for Language Access
- Become a partnership member of the Microsoft IT Academy
- Provide IT technical certified courses through Computer/Work Force Training Services

#### Adult Learning Services

- There has been a cut in state and federal funding for FY2010-11. Luckily, there is no serious need for books or equipment and most of the money can be put toward instructor salaries. Classes were cut but not many, thanks to volunteer instructors.
- There is a need for funding from other sources to pay for smaller expenses like caps/gowns for GED graduation and scholarships to pay GED testing fees. Local organizations like the Los Alamos Rotary Club have provided this type of funding in the past. Proposals for funding will be submitted to other local organizations as well.
- A proposal to become a GED testing center may be submitted to the Public Education Department. This could bring more students to the UNM-LA campus, and it would make it easier to obtain data needed to measure GED program success.

### **STUDENT SERVICES**

UNM-Los Alamos Student Services continued to provide quality services and programs for students and the overall UNM-Los Alamos campus community.

#### Recruitment & Retention

- Continue to enhance participation and transferring of ABE/GED students into credit programs
- Time will continue to be provided for staff to participate in professional development trainings.
- Student Services staff will continue to participate in curriculum committee meetings and

the College Cornerstone program.

- Student Services staff will continue to provide outreach services to Northern New Mexico High Schools, Middle Schools, Home School Communities, and adult populations within the region.
- Student Services staff will continue to implement retention strategies and modify strategies to best meet the changing needs of the UNM-LA student population.
- Work with Adult Learning Services staff on transition of students from GED to enrollment at UNM-LA.
- Support new part-time Financial Aid staff person.
- Encourage staff to participate in professional development trainings.
- Continue to participate in the College Cornerstone program.
- Invite area high school juniors and seniors to UNM-LA campus for hands-on activities during fall 2009.
- Invite 7<sup>th</sup>, 8<sup>th</sup>, 9<sup>th</sup> and 10<sup>th</sup> graders to UNMLA Campus for hands-on activities during spring.
- Mandatory Advisement
- Early Alert System
- Mid-Term Alert System
- Help Days - Friday before week of mid-terms and Friday before week of finals.
- University Studies class
- UNM-LA presence at high school and community events.

#### Advisement

- Advisors will continue to be encouraged to regularly participate in main campus Academic Advisement Network.
- Staff will continue to be encouraged and provided time to participate in professional development trainings.
- Continue to provide students with guidance in choosing degree programs, selecting appropriate classes towards the programs and graduation.
- Continue to offer various types of appointments and schedules to meet student advisement needs.

#### Registrar

- Continue working with Banner and DARS to provide appropriate access to information and support decision-making reporting
- Facilitate expansion of the Dual Credit program and work with campus departments to coordinate details associated with recruitment, admissions, scheduling, book services, and finance.
- Increase efficiency and the focus of customer in LoboWeb and on paper.

- Staff will continue to be encouraged and provided time to participate in professional development trainings.

#### Financial Aid

- Hire .75 FTE staff with primary responsibility is financial aid services.
- Participate in quarterly Branch Campus Financial Aid trainings.

#### Scholarships

- Provide information to enrolled students on scholarship availability.
- Organize scholarship fund raising activity.

#### Bernalillo Education Center

With increased partnerships and collaborations with Sandoval County Tribal Governments, Municipalities, Public Schools, Non-profit organizations, and higher education institutions, the Bernalillo Education Center has experienced significant increases in enrollment. These partnerships and collaborations have increased services to area students, as well as the recruit of local instructors, enhance dual credit opportunities for high school students, and create an overall sense of community within our Center population.

- Continue work with Bernalillo High School. Assist with book logistics, course planning (ENGL150, ENGL101, and MATH120). Continue program planning work with BHS counselors, principals, and faculty.
- ARSC198/UNIV101- Santo Domingo, Jemez, Cochiti and Santa Ana Pueblos have expressed interest in teaching courses as Dual Credit for community students. Work has commenced in gaining tribal administration buy-in, student recruitment, professor search, etc.
- Walatowa Charter Early College Program- continue work on establishing partnership between entities. Meetings between entities have identified specific courses, with the possibility of several Dual Credit courses offered for Walatowa students. School is currently gathering faculty resumes for possible teaching positions with UNM-LA
- Partnership with Bernalillo High School has increased overall participation by current and graduated students. Bernalillo High recently selected a new principal and plans include offering courses during the school-day. Aggressive Dual Credit outreach continues
- Cuba High School is currently gathering resumes for potential instructors. Administration would like to offer more Dual Credit courses.
- Continue to promote UNM-LA/Bernalillo programs
- Continue to partner with area organizations in offering more access to programs in and around Sandoval County
- Develop a strategic marketing plan
- Research the possibility of offering tutoring in Math, English
- Staff involvement in community committees, groups, etc.

- Develop relations between UNM-LA and Jemez Valley High School. More outreach, open communication with school
- Work with Marketing to develop UNM-LA/B website

**APPOINTMENTS TO STAFF**

<b>Name</b>	<b>Position</b>	<b>Area</b>	<b>Effective</b>
Jill Gonzalez	On-Call Academic Advisor	Student Services	08/31/09
Alex Han	Computing Services Mgr.	Executive Director	08/31/09
Elizabeth Rademacher	Br/Div Coordinator	Student Services	10/26/09
Marlene Grey	Administrative Assistant II	Adult Learning Svcs	10/01/09
Emily Veenstra-Ott	Lib.Inf.Spec II	Library	01/05/10
William Gilson	Computing Services Mgr.	Executive Director	03/01/10

**SEPARATIONS FROM STAFF**

<b>Name</b>	<b>Position</b>	<b>Area</b>	<b>Effective</b>
Jill Gonzales	Br/Div.Coord.Recrmt. Svcs.	Student Services	07/01/09
Lorraine Salazar	Administrative Assistant II	Adult Learning Svcs	09/03/09
Phil Garcia	Computer Assistant	Executive Director	12/22/09
Alex Han	Computing Services Mgr.	Executive Director	

**APPOINTMENTS TO FACULTY**

<b>Name</b>	<b>Position</b>	<b>Area</b>	<b>Effective</b>
Monique Morin	.25 Faculty	Computer Science	09/01/09
Mickey Marsee	Curriculum Coord.	Communications	09/01/09
Doug Wokoun	Curriculum Coord.	Computer Science	01/01/10
Carol Furchner	.25 FTE	Instr. Techn.	01/01/10

**SEPARATIONS FROM FACULTY**

<b>Name</b>	<b>Position</b>	<b>Area</b>	<b>Effective</b>
Lee Bollschweiler	Division Head/Curric. Coord.	Computer Science	12/31/09
Doug Wokoun	Curriculum Coordinator	Computer Science	05/30/10

## **PUBLICATIONS**

### STAFF

#### **Joseph Moreno**

- Wrote all course schedule newsletter articles
- Wrote advertisements for Town of Bernalillo water bill newsletters
- Developed, or aided in development, of outreach materials, in-house forms, etc.
- Moreno, J. (200). UNM-Los Alamos Reflects on History with BPS. *Bernalillo Public Schools News*, November 24, 2009.

#### **Kathryn Vigil**

- Wrote two articles for Los Alamos Monitor
- Wrote final Public Policy Article at in spring 2009 and end of three-year term for NASPA Region IV-West Newsletter (Fall 2009).

## **OUTSIDE PROFESSIONAL ACTIVITIES**

### STAFF

#### **Cedric D. Page, Executive Director**

- Member, Board of Trustees, United Way of Northern New Mexico
- Member, JUNTOS, Adult Advisory Board, Los Alamos, NM
- Member, New Mexico Alliance for Minority Participation Board of Directors
- Member, Los Alamos Local Resource Advisory Board, Big Brothers/Big Sisters of Northern New Mexico
- Member, Schools Building Communities (Indianapolis, IN), Board of Advisors
- President, New Mexico Association of Community Colleges, 2010
- Member, Governor's Data Warehouse Council, New Mexico
- Member and Chair, Regional Development Corporation (New Mexico), Board of Directors
- Member, Bachelor of Fine Arts/Production Animation Program Advisory Committee, DigiPen Institute of Technology
- Member, Bachelor of Science/Game Design Program Advisory Committee, DigiPen Institute of Technology
- Member, Master of Science in Computer Science Program Advisory Committee, DigiPen Institute of Technology
- Education Specialist, Accrediting Commission for Career Schools and Colleges

#### **Kate Massengale**

- Serves on the board for the Justice System Interpreters Resource Partnership.

*UNM-Los Alamos Annual Report  
July 1, 2009 to June 30, 2010  
Cedric D. Page, Ph.D., Executive Director*

- Attended training in Federal ARRA BTOP grant compliance guidelines, Summer 2010; attended CARC training at UNM-A; trained in NSF grant writing with Michelle Hall.
- Member of the Modern Language Association
- Member of Next Big Idea Committee for Los Alamos Chamber of Commerce
- Member of Creative Culture Committee for Los Alamos County

**Patricia Boyer, Student Services Director**

- President for NMHEAR as of February 2010
- Local Arrangements Committee for NASPA Regional Conference in Santa Fe, NM
- Enrollment Management Team Member (main campus)
- Local arrangements point person for NASPA REGION-IV WEST conference in Santa Fe, NM
- Secretary for Los Alamos Art Council Board
- Worked on Art Council Events
- Attended Proposal Writing Workshop offered by LANL March 2010
- Attended Branch Financial Aid Retreat in Valencia and Gallup
- Attended College Cornerstone Retreat
- Attended Los Alamos Family Crisis Response Training
- Attended Los Alamos Chamber evening events

**Kathryn Vigil, Registrar**

- Member National Academic Advising Association (NACADA) – National Conferences
- Member Association of Academic College Registrars and Admission Officers. (AACRAO)
- Member Rocky Mtn. Assoc. of College Registrars and Admission Officers (NMACRAO)
- Member Dual Credit Committee of HED/PED Alignment Task Force
- Presentation to UC-Santa Cruz Women's Club (Spring 2010)
- Presentation to Toastmasters Club regarding services at UNMLA
- Presentation to LANL Safety Division
- Attended LA Family Council Crisis Response Training

**Bonnie J. Gordon**

- Member of the Northern New Mexico Chapter of the National Association of Presswomen.
- A member of the National Council for Marketing and Public Relations.
- Belong to e-lists concerned with design and web e-lists on four websites.

**Steve Ciddio, Bookstore Manager**

- Member, NM College Bookstore Association
- Member, National Association of College Stores

*UNM-Los Alamos Annual Report  
July 1, 2009 to June 30, 2010  
Cedric D. Page, Ph.D., Executive Director*

- Member, Rotary Club
- Member, Knights of Columbus
- Leadership Los Alamos

**Valida Dushdurova, Institutional Researcher**

- Member, New Mexico Association of Community Colleges (NMACC)
- Attended bi-monthly meetings of the Institutional Researchers Group at NMACC

**Eileen Gallegos**

- Volunteer at the Town of Taos Halloween Carnival - 2009
- A member of the PACE NM organization
- Own and operate a seasonal gift shop

**Bonnie Gordon, Communications and Marketing**

- Vice-President, Northern New Mexico Chapter of the National Association of Presswomen
- Member, National Council for Marketing and Public Relations
- Member, Public Relations Society of America

**Michelle Worley, Adult Learning Center Program Coordinator**

- Professional Development:
- NMAEA Fall 2009 conference
- Site visits (Bernalillo, Cuba, Delancey Street, Pojoaque)

**Jackie LaNew, Advisor**

- Student Government Advisor
- Attended UNM Advisor Network Institutes
- Member Aquatic Exercise Association
- Volunteer at Los Alamos Fitness Center

**Joseph Moreno, Senior Student Program Advisor/Campus Representative**

- Chair of the Bernalillo High School Alumni Association
- Bernalillo High School Assistant Volleyball Coach (State of New Mexico Level II Athletic Coaching License)
- Bernalillo Public Schools Superintendent Search Committee Member
- Town of Bernalillo Website Development Committee
- Town of Bernalillo Education Committee
- Taught AMST200: “Hispanic Folk Traditions of the Southwest” for UNM-LA (Spring 2010)

**Leonard Prairie, Administrative Assistant II**

- Completed “Data and Decisions Academy” (two online courses)

**FACULTY**

- In July 2009, Monique Morin gave an invited talk at the CIPRES All Hands Meeting held at UC Berkeley; the title was "Data-Informed Reconstruction of Single-Diploid-Hybrid Phylogenies."
- Monique Morin attended the national "Grace Hopper Celebration of Women in Computing" held in Tucson, Arizona the end of September 2009.
- Kay Willerton served on the statewide Mathematics Articulation committee
- Oksana Gerlits and Kay Willerton attended Outreach Forum on Building STEM Research and Education Capacity at HSIs held in Albuquerque in September 2009
- Oksana Gerlits and Kay Willerton attended Follow-up Workshop to HSI-STEM Outreach Forum Overview of NSF Programs and Proposal Opportunities in December 2009
- Kay Willerton served as the chair of the Selection Committee—LAHS Athlete of the Year Award
- Kay Willerton was a member of NMMATYC and AMATYC
- Eva Artschwager became the Fast Forward NM Training and Development Coordinator
- Paula Couselo continues to head up the NM Center for Language Access
- Carol Furchner and Eva Artschwager (adjunct faculty and Fast Forward NM Training and Development Coordinator) completed a year-long Sloan Consortium certification program in Online Teaching
- Adjunct instructor James Lewis (History, Political Science) was awarded a MA in Church-State Studies from Baylor University
- Curriculum Coordinator for the Fine Arts, Patrick Harris, exhibited paintings at the Trinidad (CO) Art Center’s summer show “Amazing Animals” and participated in an exhibition at the Washington Pavilion of Arts & Science in Sioux Falls, SD. Another solo exhibition at the Subscription in Santa Fe resulted in the sale of several works to private collectors in the Rio Grande valley.
- Irina Alvestad participated to *Nanoscience Education Workshop* in Santa Fe, Sept. 27 – 28, 2009
- Lynne Williams peer reviewed "I did not realize so many options are available": Cognitive authority, emerging adults, and e-mental health" to be published in the Spring 2011 issue of *Library & Information Science Research*:  
[http://www.elsevier.com/wps/find/journaldescription.cws\\_home/620211/description#](http://www.elsevier.com/wps/find/journaldescription.cws_home/620211/description#)
- Lynne Williams will be presenting at the social science conference:  
<http://2010.thesocialsciences.com/sessions/index.html>

*UNM-Los Alamos Annual Report  
July 1, 2009 to June 30, 2010  
Cedric D. Page, Ph.D., Executive Director*

- Kate Massengale worked with USDOE and James Bearzi of NMED to get a Joint Memorial on Environmental education initiatives through NM Legislature in spring 2010.

- Dennis Davies-Wilson

Presentations

- Information Literacy training, New Mexico Highlands University Library, Las Vegas, NM, June 18, 2010.
- “Online Information Literacy: Making the Most of the One-Shot Library Skills Session,” New Mexico Library Association Annual Conference, Ruidoso, NM, April 9, 2010.

Conferences/Meetings

- NMCAL Executive Board and Committee Chairs Meeting, Albuquerque, NM, June 2010.
- UNM Branch Libraries Meeting, Albuquerque, NM, May 18, 2010.
- LIBROS Advisory Board Meeting, Albuquerque, NM, May 18, 2010.
- RMRIUG Annual Meeting, Albuquerque, NM, May 17, 2010.
- New Mexico Library Association Annual Conference, Ruidoso, NM, April 8-9, 2010.
- New Mexico Consortium of Academic Libraries (NMCAL) Meeting, Santa Fe, NM, January 25-26, 2010.
- NMCAL Retreat, Acoma, NM, August 5-7, 2009.

Committees

- NMCAL Professional Development Committee, Chair
- UNM-Los Alamos Director’s Council
- UNM-Los Alamos E-Learning Committee
- UNM-Los Alamos Faculty Assembly Operations Committee
- UNM Faculty Senate - Los Alamos Branch Senator
- UNM-Los Alamos Academic Freedom and Tenure Committee, Chair
- UNM-Los Alamos Library Committee, Chair
- UNM-Los Alamos Curriculum Committee, Chair

Memberships

- LIBROS Advisory Board (LAB)
- New Mexico Consortium of Academic Libraries (NMCAL)
- New Mexico Library Association (NMLA)
- Music Library Association (MLA)
- Music Library Association Mountain Plains Chapter (MPMLA)

Offices

- Chair, NMCAL Professional Development Committee
- Chair, UNM-Los Alamos Academic Freedom and Tenure Committee
- Chair, UNM-Los Alamos Curriculum Committee
- Chair, UNM-Los Alamos Library Committee
- Faculty Senator, UNM-LA Representative

Workshops/Training

- RMRIUG Annual Meeting, University of New Mexico, Albuquerque, NM, May 17, 2010.
- Hands-on WebCT Workshop, UNM-Los Alamos, February 26, 2010
- Individual training received for Classroom Capture, September, 2009.

Other

- Taught Information Literacy session, UNIV 101, June 24, 2010.
- Created library activity for the Si Se Puede / Gear-up Conference, UNM-Los Alamos, May 13, 2010.
- Mediated Faculty Assembly Professional Development Discussion, UNM-Los Alamos, April 30, 2010.
- Presented customized session for English 102, Bernalillo Site, March 9, 2010.
- Developed resource guide for Sociology 101 class, summer 2009.
- Taught “Information Literacy” sessions for all sections of ARSC 198, summer 2009.

Outside Activities

- Música Antigua de Albuquerque (professional early music ensemble); Albuquerque, NM - Regular performance season, 2009-2010.
- PDQ Bach performance, bassoonist, *Echo Sonata*, Los Alamos, NM, April 10, 2010.
- Los Alamos Symphony Orchestra, bassoonist, Los Alamos, NM, spring, 2010.
- Guest performer, New Mexico Gay Men’s Chorus, June 2010