

## About Us

### Only at UNM-LA

- An AA program in Applied Technology with four concentrations to train the technicians of the future.
- A faculty of highly qualified and dedicated professionals, many of whom work in their field in addition to teaching at UNM-LA. 35% of faculty have a doctoral degree and 40% have a master's degree.
- The only AS program in Network Administration in New Mexico that has its technical courses fully online.
- A Library with a growing collection of over 20,000 items. UNM-LA is home to an extensive Southwest Collection.
- Affordable student housing in efficiency apartments. There are 64 units available for single or double occupancy.
- The Bernalillo Education Center works closely with Tribal Education Directors to offer programs for Pueblo students that incorporate Pueblo-specific cultural and linguistic curriculum.
- The 21st Century Classroom Technology Center opened in July 2010, demonstrating how current and emerging technologies can be used to enhance and student engagement and learning.

### Learn more about Us

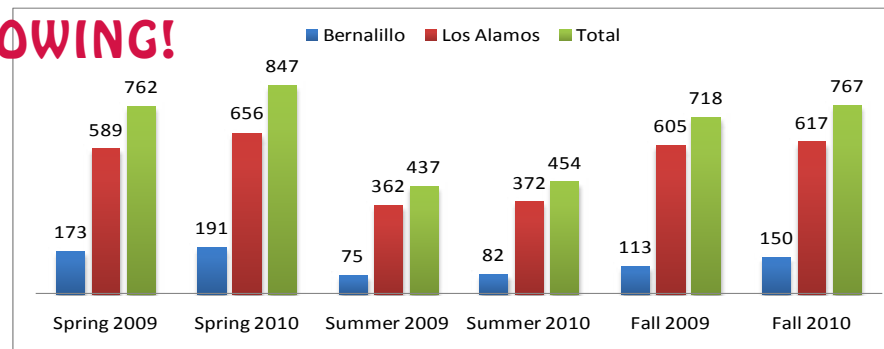
UNM-Los Alamos has long been an integral part of northern New Mexico. UNM-LA provides high quality instruction to all our students. We offer 19 associate degrees, 15 certificates and 9 employability certificates. Small classes make the difference for many students. UNM-LA has a 9:1 ratio of students to instructor. In 2009-2010, 30 students earned associate's degrees. UNM-LA has dual enrollment agreements with several area high schools allowing high school students to take college level courses for credit. Enrollment in the dual credit program has increased 500% in the last two years.

In 2009-2010:

- Thirty four high school graduates and GED recipients participated in the UNM-LA Summer Bridge program, which introduces recent graduates to the college experience.
- Seventy-six students participated in the College Cornerstone program, designed to provide foundational skills in math, English, reading, science, and other academic skills to academically under-prepared students.
- Thirty-seven individuals received GEDs after taking Adult Basic Education courses at UNM-LA.
- One hundred sixty-six enrollments were recorded in Bachelor and Graduate Programs at UNM-LA where live classroom, on-line and instructional TV courses at the upper division and graduate level are offered.
- In the 2009-2010 fiscal year, fund-raising events and campaigns brought in \$79,335.75 for the UNM-LA endowment and scholarship funds.
- UNM-LA offers 18 merit-based and two need-based scholarships ranging from \$500 to \$3500 per year.
- UNM-LA provided goods and services in the amount of \$1,269,100 within its service area.
- Annual payroll expenditures were \$3,216,566.
- UNM-LA has 247 full-time and part-time faculty, staff and student employees. Seventy-two percent live in the tri-county area (Los Alamos, Santa Fe and Rio Arriba).

### WE'RE GROWING!

Enrollment has steadily increased over the past six semesters.



### Fall 2009

Full-time students	192
Part-time students	526
Average age, part-time	34
Average age, full-time	21
From Los Alamos	356
From Rio Arriba County	76
From Sandoval County	145
From Santa Fe County	68
Other Counties	73
Hispanic	267
White Non-Hispanic	328
Native American	53
<b>Total Credit Students</b>	<b>718</b>
<b>ESL &amp; GED Students</b>	<b>224</b>
<b>Community Education Participants</b>	<b>87</b>
<b>Customized Training &amp; SBDC participants</b>	<b>220</b>
<b>Total All Students</b>	<b>1,249</b>

### Spring 2010

Full-time students	165
Part-time students	682
Average age, part-time	32
Average age, full-time	24
From Los Alamos	408
From Rio Arriba County	96
From Sandoval County	182
From Santa Fe County	68
Other Counties	93
Hispanic	320
White Non-Hispanic	381
Native American	63
<b>Total Credit Students</b>	<b>847</b>
<b>ESL &amp; GED Students</b>	<b>224</b>
<b>Community Education Participants</b>	<b>77</b>
<b>Customized Training &amp; SBDC participants</b>	<b>311</b>
<b>Total All Students</b>	<b>1,459</b>

## Facilities & Events

## Student Success



### Facilities

- UNM-Los Alamos has 113,502 square feet of usable building space. This includes 23 classrooms, as well as two lecture halls, a complete professional kitchen, offices, a Student Center and other facilities. A new lecture hall and classroom renovations were completed in 2010.
- The facilities are available for rental and the campus provides space for local non-profits at no cost if UNM-LA staff or faculty are a member of those organizations. UNM-LA is a Gateway site for high speed connections to Encarta and video conferencing services.
- UNM-LA provides student housing in 64 studio apartments.
- Classes are also held at other locations, including the Bernalillo Education Center, a number of local high schools, and several Pueblos.

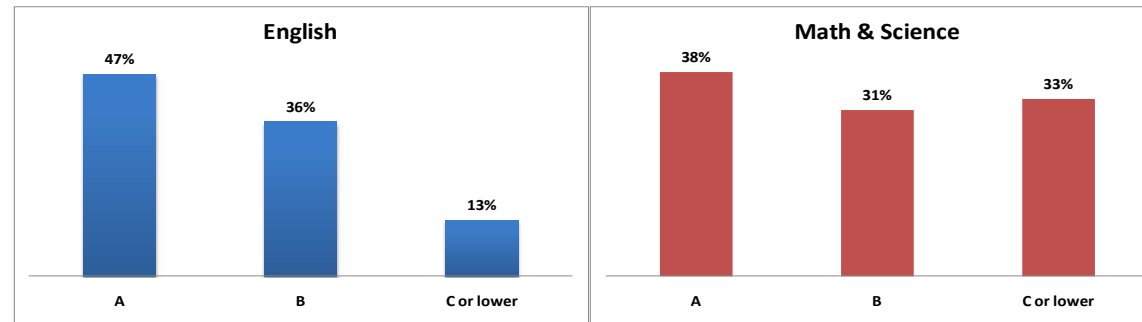
### Community Events

UNM-LA sponsors and co-sponsors community events each year. Some of the events this year included:

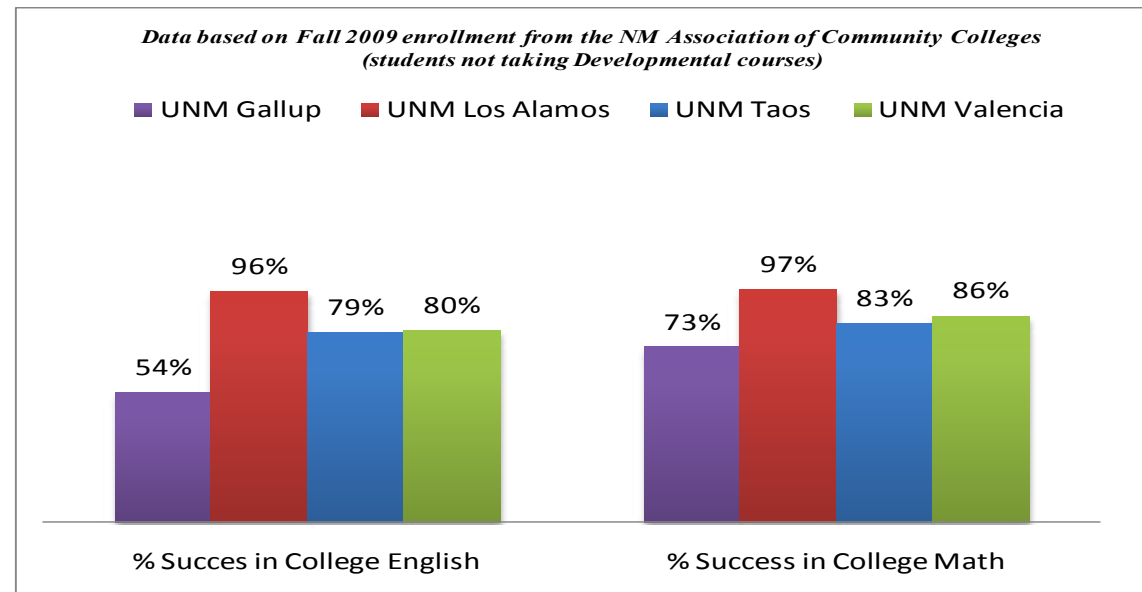
- Leadership Los Alamos Education Session
- 21st Century Classroom Technology Training
- Harry Potter's World Exhibit
- Greek Mythology Exhibit
- Election forums with the League of Women Voters
- Taste of Los Alamos Fundraiser

## Our Students Succeed and We Can Prove It!

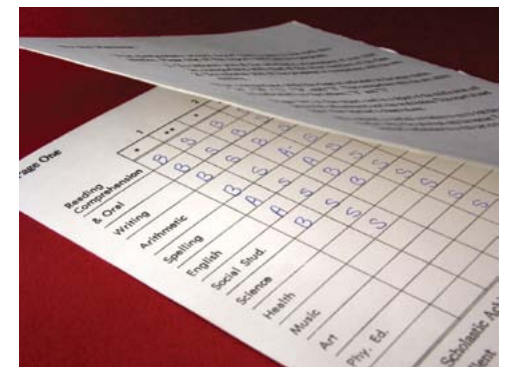
### Grades of UNM-LA transfer students at UNM Albuquerque 1998-2010



### Fall 2009 Success rates in English and Math



# UNM-LA 2009-2010 Report Card



 UNM LOS ALAMOS

[www.la.unm.edu](http://www.la.unm.edu)

505-662-5919

800-894-5919